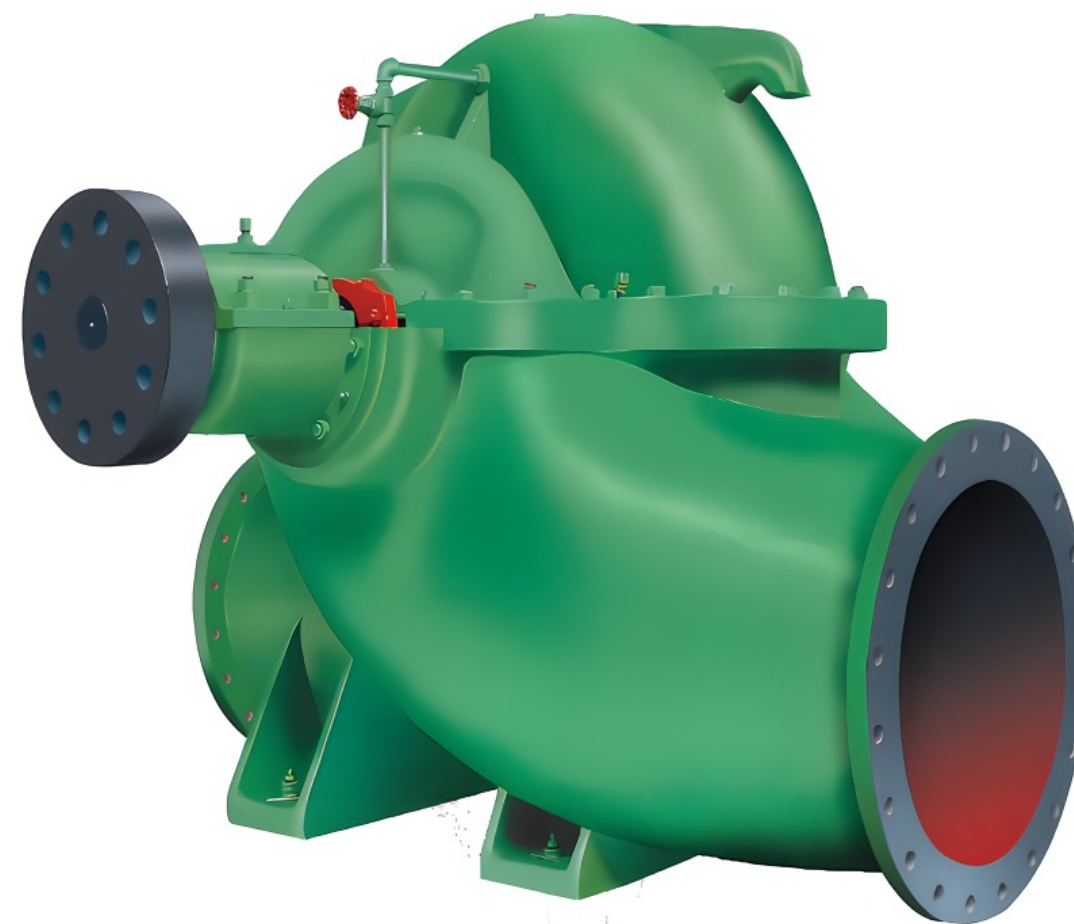


SA型 单级双吸水平中开式离心泵

SA型 单级双吸水平中开式离心泵

Type SA Single-stage Double-suction Horizontal Split Centrifugal Pump

Type SA Single-stage Double-suction Horizontal Split Centrifugal Pump



汨罗市博源机电有限公司
Miluo Boyuan Electromechanical Co., Ltd.



汨罗市博源机电有限公司

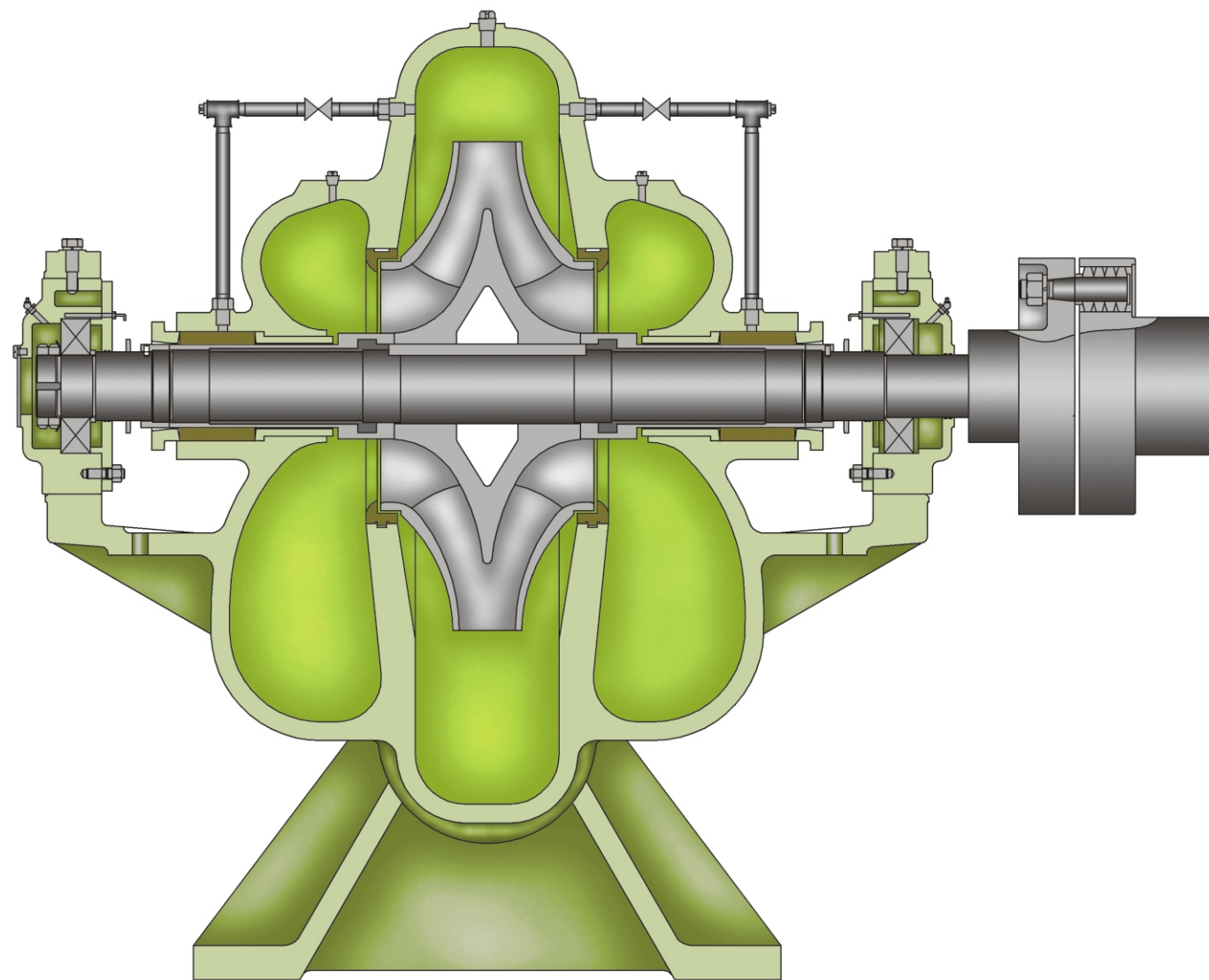
Miluo Boyuan Electromechanical Co., Ltd.

地 址：湖南省岳阳市汨罗市古培镇大众村十一组

联系电话: 13387303234 13874084888

E-mail : 13387303234@163.com

官 网 : <http://www.cbump.com>



SA 型单级双吸水平中开式离心泵

Type SA Single-stage Double-suction Horizontal Split Centrifugal Pump

概述

SA型泵系单级、双吸水平中开式离心泵，适用于工厂、城市、矿山、电站、农田、水利工程等领域。用于输送不含固体颗粒的清水或物理、化学性质类似于水的其它液体，被输送的介质温度为0 ~ 80 。允许最大进口压力0.6MPa。

参数范围：

流量Q：72 ~ 10000m³/h

扬程H：9 ~ 110m

型号说明：

如：10SA—6JA

10—吸入口径被25除（即吸入口径为250mm）

SA—单级双吸水平中开式离心泵

6—比转数被10除化整的约数

J—表示额定转速变化

A—表示叶轮外径第一次变化，A、B、C……依次类推

结构说明：

泵为卧式安装，泵壳于轴心线水平分开，上部为泵盖，下部为泵体，吸入口和吐出口均在泵轴线下方的泵体上，其中心线与轴线垂直，检修时不需拆卸进、出水管路和电动机即可揭开泵盖，取出转子部件进行检修。轴封采用软填料密封或机械密封。

轴承室根据不同运行工况选用滚动轴承室或滑动轴承室，滚动轴承室根据不同运行工况采用油脂或稀油润滑，滑动轴承室则必须用稀油润滑。

旋转方向

从电机端向泵看，SA型泵为逆时针方向旋转，即吸入口在左，吐出口在右。也可以根据用户要求将驱动端移到泵的另一端，此时，转向和吸入、吐出口方向均与上述相反。

主要零件及材质

泵的主要零件有泵体、泵盖、叶轮、轴、双吸密封环、轴套等。除轴的材质为优质的碳钢外，其余零件材质为铸铁制成。

成套范围

成套供应泵，电机、联轴器。泵吸入口径（≥200mm）配公用底座，其余不配底座。

订货时请注明主要零件材质及轴封形式，若对泵、电机有特殊要求，可与本公司协商有关技术要求

General

Type SA pump is single-stage double-suction centrifugal pump with horizontal split casing. It is widely used in fields of factories, cities, mines, power stations, farmlands and water conservancy. It is provided for delivering clear water without solid particles or other liquid which is physically and chemically similar to clear water. The temperature of the liquid is 0 ~ 80 . Permissible maximum inlet pressure is 0.6MPa.

Performance range

Capacity Q: 72 ~ 10000m³/h

Head H: 9 ~ 110m

The description of pump type

For example 10SA—6JA

10—The number obtained from the inlet diameter divided by 25 (inlet diameter is 250mm).

SA—Single-stage double-suction centrifugal pump with horizontal split casing.

6—The number obtained from the pump specific speed divided by 10.

J—The rated speed is changed.

A—Outer diameter of impeller is changed.

Construction

The pump is horizontally mounted, the pump casing and pump cover are divided along the axis, the upper is the cover, the lower is casing, the inlet and the outlet are on the pump casing under the axis, and their centerline is perpendicular to the axis, the rotor elements will be removed without disturbing the inlet piping, the outlet piping and the motor, only dismantling the pump cover while inspection. The shaft seal is either packing seal or mechanical seal.

The rolling bearing house and the sliding bearing house can be selected according to different work operation, the rolling bearing house uses either grease or dilute oil, the sliding bearing house must use dilute oil.

The direction of rotation

The rotation of the pump rotor is counter clockwise looking from the motor to the pump. i.e. the inlet is on the left and the outlet is on the right. The driving end may be moved to another one according to customers' requirements, meantime, the rotation, the direction of the inlet and the outlet are opposite to the above-mentioned.

The material of main parts of pump

The pump consists of pump casing, cover, impeller, shaft, double-suction wearing ring and the shaft sleeve, etc. The other parts are made of cast iron except that the material of the shaft is high-quality carbon steel.

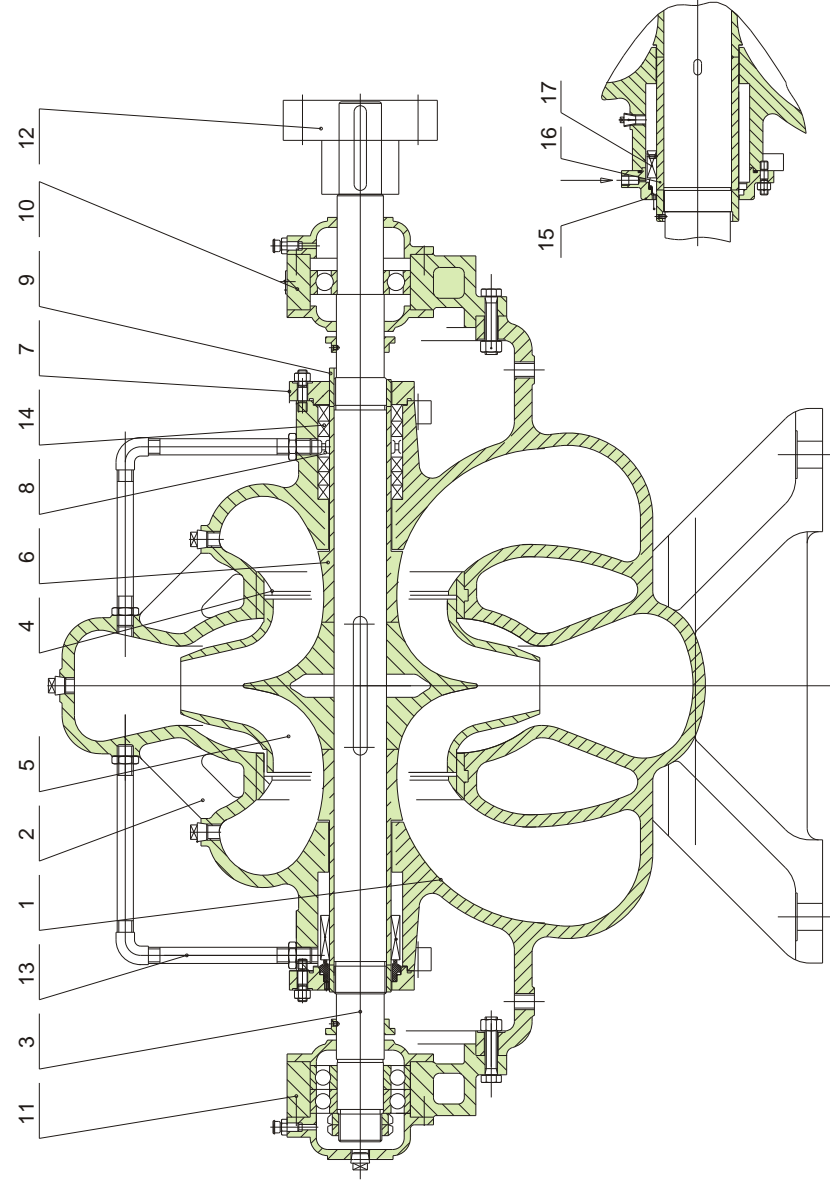
Complete provision range

Pump, motor, coupling. Common bedplate will be supplied when inlet diameter of pump is less than 200mm.

Please give indication of the material of main parts and shaft sealing type of pump in contract. If you have any special requirement, please contact us without hesitation

SA型 泵结构图 (结构一)

Sectional Arrangement Figure for Type SA Pump(Fig.1)

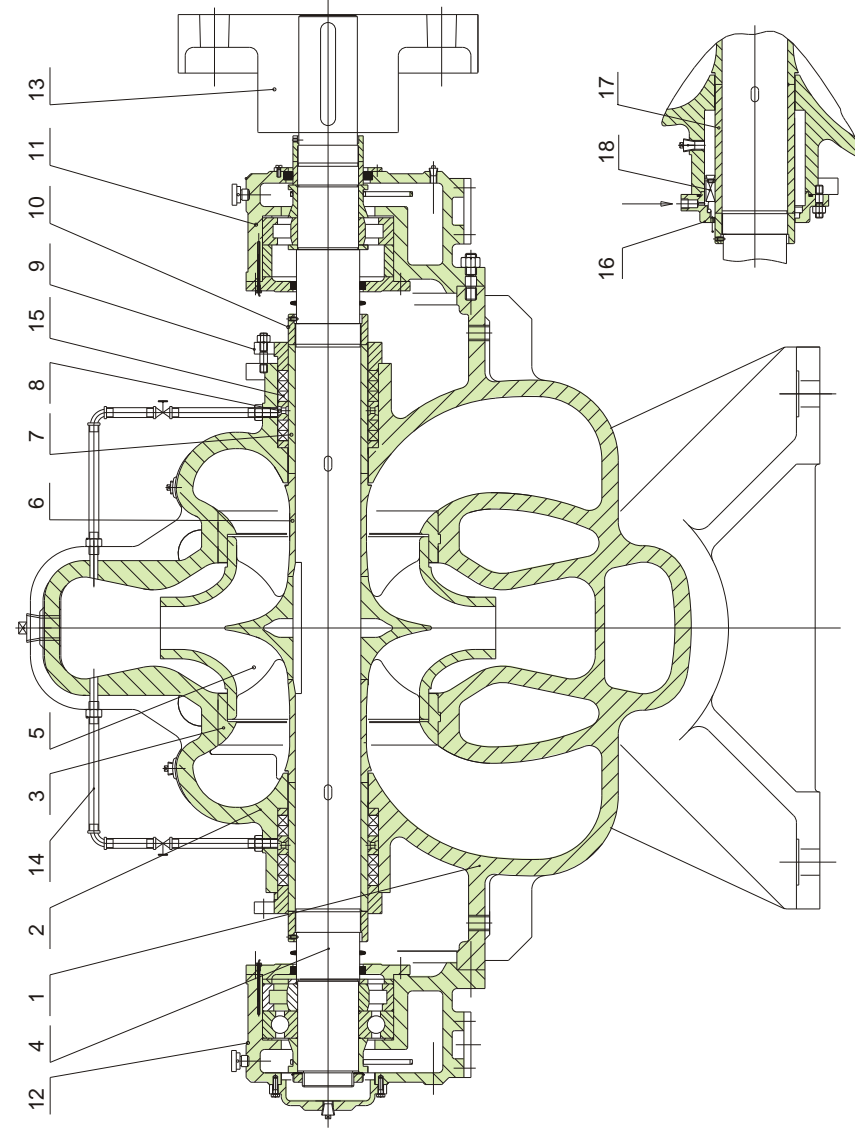


泵主要零件 Main Parts of Pump

- | | |
|--------------|------------------------|
| 1. 泵体 | Casing |
| 2. 泵盖 | Pump Cover |
| 3. 主轴 | Shaft |
| 4. 双吸密封环 | Wearing Ring |
| 5. 叶轮 | Impeller |
| 6. 轴套 | Shaft Sleeve |
| 7. 填料压盖 | Packing Gland |
| 8. 填料环 | Packing Ring |
| 9. 轴套螺母 | Sleeve Nut |
| 10. 滚动轴承体甲部件 | Bearing Support |
| 11. 滚动轴承体乙部件 | Bearing Support |
| 12. 联轴器 | Coupling |
| 13. 水封管部件 | Water Sealing Pipe |
| 14. 填料 | Packing |
| 15. 机封压盖 | Mechanical Seal Cover |
| 16. 机封轴套 | Mechanical Seal Sleeve |
| 17. 机械密封 | Mechanical Seal |

SA型 泵结构图 (结构二)

Sectional Arrangement Figure for Type SA Pump(Fig.2)

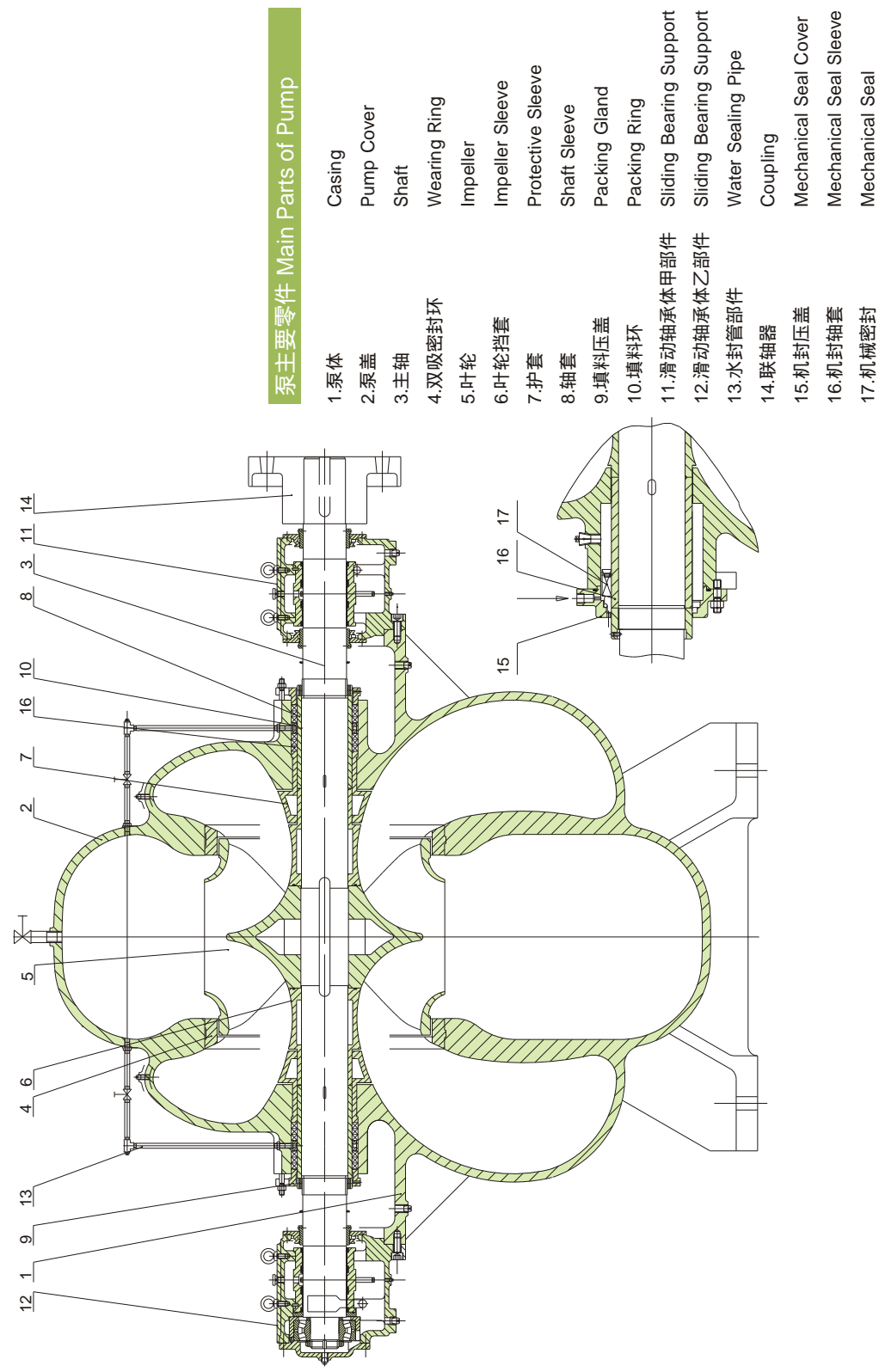


泵主要零件 Main Parts of Pump

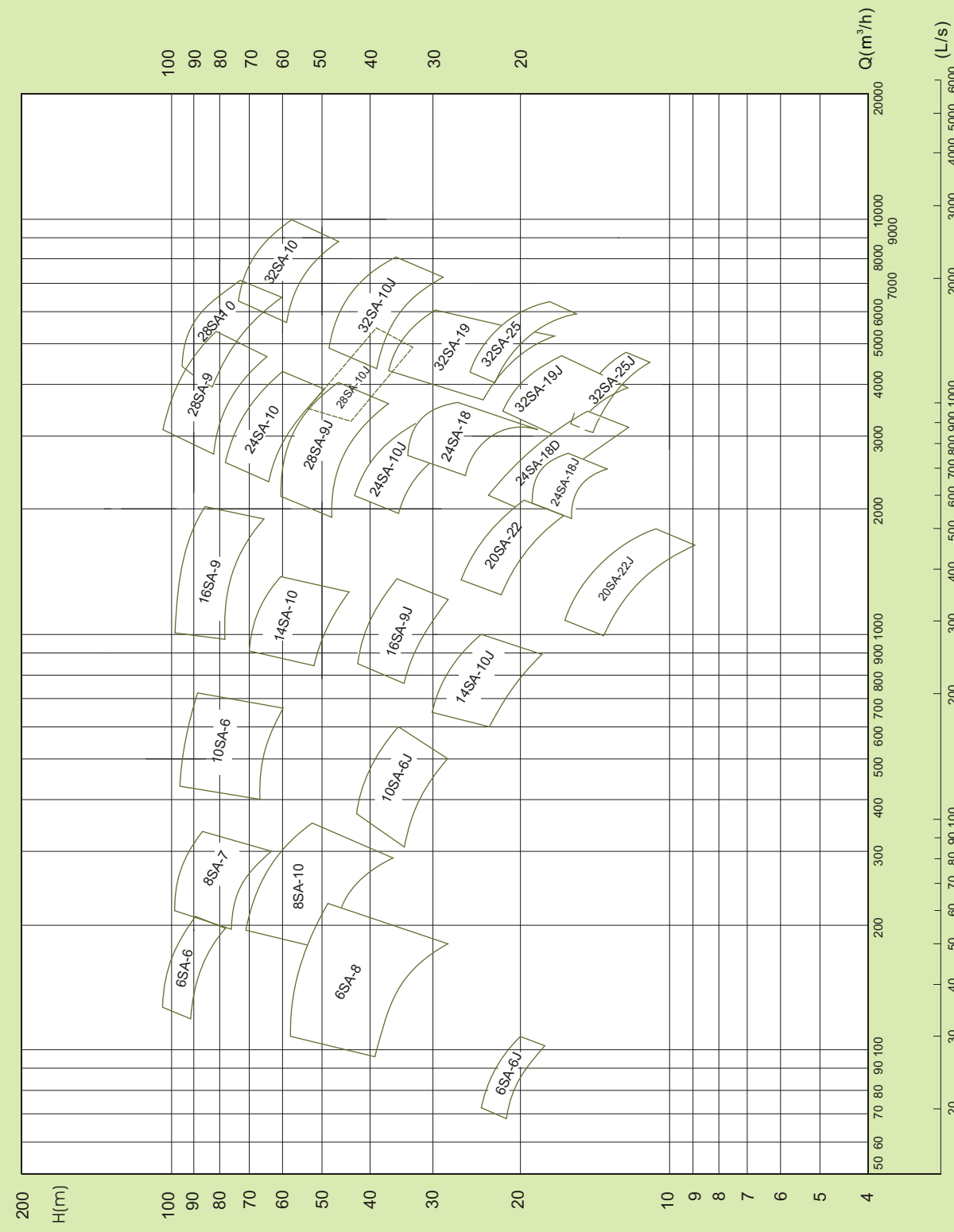
- | | |
|--------------|------------------------|
| 1. 泵体 | Casing |
| 2. 泵盖 | Pump Cover |
| 3. 双吸密封环 | Wearing Ring |
| 4. 轴 | Shaft |
| 5. 叶轮 | Impeller |
| 6. 叶轮挡套 | Impeller Sleeve |
| 7. 轴套 | Shaft Sleeve |
| 8. 填料环 | Packing Ring |
| 9. 填料压盖 | Packing Gland |
| 10. 轴套螺母 | Sleeve Nut |
| 11. 滚动轴承体甲部件 | Bearing Support |
| 12. 滚动轴承体乙部件 | Bearing Support |
| 13. 联轴器 | Coupling |
| 14. 水封管部件 | Water Sealing Pipe |
| 15. 填料 | Packing |
| 16. 机封部件 | Mechanical Seal Parts |
| 17. 机封压盖 | Mechanical Seal Cover |
| 18. 机封轴套 | Mechanical Seal Sleeve |
| | Mechanical Seal |

SA型 泵结构图 (结构三)

Sectional Arrangement Figure for Type SA Pump(Fig.3)



SA型泵型谱图 Performance Charts



轴承型号及规格表 Bearing Type and Specification

泵型号 Pump Type	装配部位 Location		轴承名称 Bearing Name	轴承规格 Specification	数量 Quantity	轴承体结构型式 Bearing Support Type	
6SA-6	从动端		深沟球轴承	310	1	结构一 Fig.1	
	驱动端		深沟球轴承	310	1		
6SA-8	从动端		深沟球轴承	308	1		
	驱动端		深沟球轴承	308	1		
8SA-7	从动端		深沟球轴承	309	1		
	驱动端		深沟球轴承	309	1		
8SA-10	从动端		深沟球轴承	307	1		
	驱动端		深沟球轴承	307	1		
10SA-6	从动端		单列向心球轴承	312	1		
	驱动端		单列向心球轴承	312	1		
14SA-10	从动端		单列向心球轴承	312	2		
	驱动端		单列向心球轴承	312	1		
16SA-9	从动端		滑动轴承 Sliding Bearing				结构三 Fig.3
	驱动端		滑动轴承 Sliding Bearing				结构三 Fig.3
16SA-9I	从动端	Driven End	深沟球轴承	315	2	结构一 Fig.1	
	驱动端	Driving End	深沟球轴承	315	2		
20SA-22	从动端		深沟球轴承	312	2		
	驱动端		深沟球轴承	312	2		
24SA-10	从动端		深沟球轴承	6318	1	结构二 Fig.2	
	驱动端		深沟球轴承	6318	1		
24SA-18	从动端		滑动轴承 Sliding Bearing			结构三 Fig.3	
28SA-9	从动端		深沟球轴承	326	2	结构二 Fig.2	
	驱动端		深沟球轴承	326	2		
28SA-10	从动端		深沟球轴承	326	2		
	驱动端		深沟球轴承	326	2		
32SA-10	从动端		深沟球轴承	6328	2		
	驱动端		深沟球轴承	6328	2		
32SA-19	从动端		深沟球轴承	318	1		
	驱动端		深沟球轴承	318	1		
32SA-25	从动端		深沟球轴承	318	1		
	驱动端		深沟球轴承	318	1		

泵性能表 Performance Data

参数 Parameter 型号 Type	流量 Capacity Q		扬程 Head H	转速 Speed n	轴功率 Shaft Power Pa	配带电动机 Motor		效率 Eff. %	必需汽 蚀余量 (NPSH) _r m	叶轮名 义直径 Impeller Dia. mm	泵重 Weight kg
	m³/h	L/s	m	r/min	kW	功率 Power kW	型号 Type				
6SA-6 (S150-97)	126	35	104		48.8			73	3		
	180	50	97	2980	59.5	75	Y280S-2	80	3.8	270	150
	216	60	87		64.8			79	5.3		
6SA-6A (S150-97A)	119	33	91		42			70	3		
	170	47.2	84.5	2980	50.1	75	Y280S-2	78	3.7	255	150
	204	56.6	76		54.8			77	4.7		
6SA-6J (S150-97B)	72	20	24		6.45			73	2.6		
	90	25	22.5	1480	7.45	11	Y160M-4	74	2.7	270	150
	108	30	20		8.4			70	2.9		
6SA-8 (S150-50)	108	30	58		24.6			69	2.9		
	160	44.5	55	2980	30.1	37	Y200L2-2	81	3.8	205	110
	193	53.5	52		33.3			82	4.4		
6SA-8A (S150-50A)	108	30	45		18.2			73	2.9		
	144	40	43	2980	21.1	30	Y200L1-2	80	3.6	185	110
	174	48.3	39		23.1			80	4.1		
6SA-8B (S150-50B)	108	30	40		15.86			74	2.7		
	133	36.9	38	2980	17.7	22	Y180M-2	78	3.1	170	110
	160	44.5	34		19.4			77	3.4		
8SA-7 (S200-95)	216	60	99		78.6			74	4		
	280	77.78	95	2980	90.8	132	Y315M-2	80	4.7	272	215
	336	93.5	87		101			79	6.6		
8SA-7A (S200-95A)	210	58.4	87		68.1			73	4		
	262	72.78	83	2980	76.9	110	Y315S-2	77	4.5	255	215
	314	87.2	74		83.3			76	5.7		
8SA-7B (S200-95B)	190	55	76		57			72	4		
	247	68.61	73	2980	64.6	75	Y280S-2	76	4.2	240	215
	300	83.4	63		71.4			72	5.4		
8SA-10	194	54	71		52			72	2.8		
	280	77.78	63	2980	59.3	75	Y280S-2	81	4.1	235	235
	351	97.5	52		65.4			76	5.3		
8SA-10A (S200-63A)	180	50	58		40.6			70	2.7		
	259	71.94	52	2980	46.5	55	Y250M-2	79	3.8	217	235
	324	90	41		50.2			72	4.9		
8SA-10B (S200-63B)	173	48	48		32.2			70	2.6		
	239	66.4	44	2980	36.6	45	Y225M-2	78	3.5	200	235
	288	80	36		38.2			74	4.2		
10SA-6	432	120	96		152.6			74	5.1		
	540	150	94	1480	177.2	250	Y355M2-4	78	6.3	530	600
	720	200	89		215			81	9.2		
10SA-6A	432	120	85.3		129.3			77.6	5.1		
	540	150	84	1480	154.5	220	Y355M1-4	80	6.3	500	600
	720	200	76		186.3			80	9.2		

泵性能表 Performance Data

参数 Parameter 型号 Type	流量 Capacity Q		扬程 Head H	转速 Speed n	轴功率 Shaft Power Pa	配带电动机 Motor		效率 Eff.	必需汽 蚀余量 (NPSH) _r	叶轮名 义直径 Impeller Dia.	泵重 Weight
	m³/h	L/s	m	r/min	kW	功率 Power	型号 Type	%	m	mm	kg
						kW					
10SA-6B	432	120	76.4		121.5			74	5.1		
	540	150	74	1480	137.8	185	Y315M-4	79	6.3	470	600
	720	200	67		164.3			80	9.2		
10SA-6J (10SA-6C)	400	111.1	42		58.7			78	3.6		
	500	138.8	39	980	65.6	90	Y315M1-6	81	4.7	530	600
	600	166.6	35		72.5			79	6.6		
10SA-6JA (10SA-6D)	300	111.1	36.8		39.4			76.4	3.3		
	400	138.8	36	980	49.7	75	Y315S-6	79	3.6	500	600
	500	166.6	33		56.2			80	4.7		
10SA-6JB (10SA-6E)	300	111.1	33		34.8			77.5	3.3		
	400	138.8	32	980	44.1	55	Y280M-6	79	3.6	470	600
	500	166.6	28		48.3			79	4.7		
10SA-6F	400	111.1	66.4		95.2			76	4.6		
	500	138.8	65.6	1480	113.1	160	Y315L1-4	79	5.7	436	600
	600	166.6	62.5		131			78	7.5		
14SA-10	900	250	70		206.5			83	4.1		
	1080	300	68	1480	230	315	Y355L2-4	87	4.6	466	1210
	1260	350	64		250			88	5.4		
14SA-10A	900	250	60		175			84	5.1		
	1080	300	58	1480	196	250	Y315 M2-4	87	6.3	440	1210
	1260	350	54		213			87	6.9		
14SA-10B	900	250	51		149			84	5.1		
	1080	300	48	1480	162.2	220	Y355M1-4	87	6.3	425	1210
	1260	350	44		179.7			84	6.9		
14SA-10J (14SA-10C)	650	180.56	30		66.6			79.7	1.79		
	800	222.22	28	980	72.6	90	Y315M-6	84	2.21	466	1210
	1000	277.78	24		78.7			83	3.16		
14SA-10JA (14SA-10D)	600	166.6	27		54.9			81	1.69		
	720	200	25	980	57.9	75	Y315S-6	84.6	2.06	440	1210
	900	250	22		64.2			84.2	2.75		
14SA-10JB (14SA-10E)	600	166.6	23		44.2			85	4		
	720	200	21	980	47.3	75	Y315S-6	87	4	425	1210
	900	250	18		53.1			83	4.1		
14SA-10F	450	125	15.6		22.7			84	5.8		
	547	152	14.5	742	25.1	37	Y280S-8	86	5.8	440	1210
	684	190	12.7		27.8			85	5.8		
16SA-9	1080	300	97.6		400			71.6	5.2		
	1260	350	96	1480	428	630	Y450-4	77	5.9	535	1910
	1620	450	90		473			84	7.9		
16SA-9A	1080	300	85.8		346			73	5.2		
	1260	350	85	1480	370	450	Y400-4	79	5.9	510	1910
	1620	450	78		410			84	7.9		

泵性能表 Performance Data

参数 Parameter 型号 Type	流量 Capacity Q		扬程 Head H	转速 Speed n	轴功率 Shaft Power Pa	配带电动机 Motor		效率 Eff.	必需汽 蚀余量 (NPSH) _r	叶轮名 义直径 Impeller Dia.	泵重 Weight
	m³/h	L/s	m	r/min	kW	功率 Power	型号 Type	%	m	mm	kg
						kW					
16SA-9B	1080	300	78		298			77	5.2		
	1260	350	76	1480	318	450	Y400-4	82	5.9	480	1910
	1620	450	68		349			86	7.9		
16SA-9J (16SA-9C)	900	250	42		130			79	1.79		
	1080	300	40	980	140	185	Y355M2-6	84	2.33	535	1910
	1260	350	38		155.3			84	2.84		
16SA-9JA (16SA-9D)	900	250	37		112			81	4.6		
	1080	300	35	980	123	160	Y355M1-6	84	4.9	510	1910
	1260	350	32		131			84	5.2		
16SA-9JB (16SA-9E)	800	222.22	33		89			80	4.6		
	900	250	32	980	95	110	Y315L1-6	83	4.6	480	1910
	1080	300	30		102.5			86	4.9		
20SA-22	1368	380	26.5		122			80	4.4		
	1980	550	21	980	133.2	160	Y315M-6	85	5.2	466	1610
	2304	640	17.5		137.2			80	5.8		
20SA-22A	1260	350	21		90			80	4.3		
	1800	500	16	980	92.3	110	Y315L1-6	85	4.9	425	1610
	2088	580	12.4		88.1			80	5.4		
20SA-22J (20SA-22B)	1080	300	16.3		61.5			78	2.8		
	1450	402.7	14	742	65	90	Y315L1-8	85	4	458	1610
	1800	500	10.7		66.8			78.5	7.1		
20SA-22JA (20SA-22C)	1080	300	10.3		37			82	2.8		
	1300	361	9.5	742	41	55	Y315S-8	85	3.5	425	1610
	1627	452	6.8		38.6			78	5.6		
24SA-10	2592	720	78		643.9			85.5	5.6		
	3420	950	71	980	738.8	900	Y5003-6	89.5	5.9	725	4100
	3600	1000	69		760			89	8.2		
24SA-10J (24SA-10A)	2160	600	43		290.7			87	5.6		
	2700	750	39	742	322.2	400	Y4503-8	89	5.9	725	4100
	2970	825	36		334.6			87	8.2		
24SA-10B	2338	649	63.5		472.85			85.5	4.6		
	3084	856.6	57.8	980	545.4	630	Y4504-6	89	7.3	655	4100
	3248	902.2	56.2		558.5			89	8.2		
24SA-18	2700	750	35.1		310.9			83.1	4.5		
	3240	900	32.6	980	330.1	400	Y4005-6	87	5.15	550	3300
	3600	1000	29.76		341.2			85.5	6.12		
24SA-18A	2520	700	25.5		206			85	6		
	3000	833.3	23	980	211	250	Y355L2-6	89	6.4	490	3300
	3165	879	19.2		204			84	8.1		
24SA-18J (24SA-18B)	2052	570	20.31		136.6			83.1	2.83		
	2466	685	18.9	742	145.6	160	Y355M-8	87.2	3.19	550	3300
	2836	787	16.1		147.4			84.4	4.03		

泵性能表 Performance Data

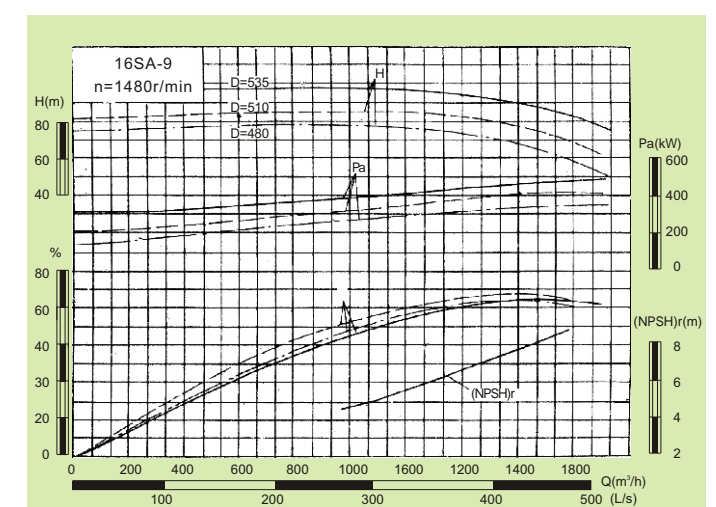
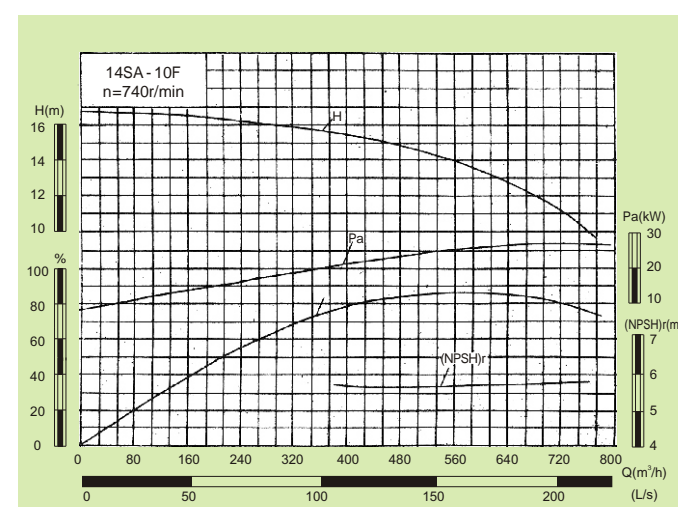
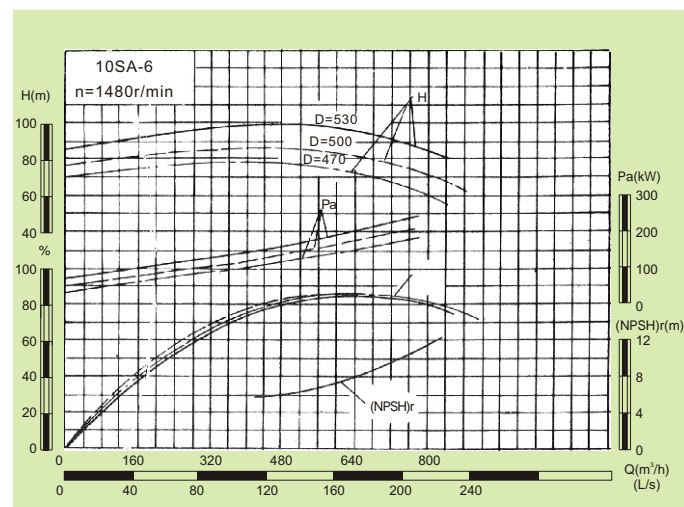
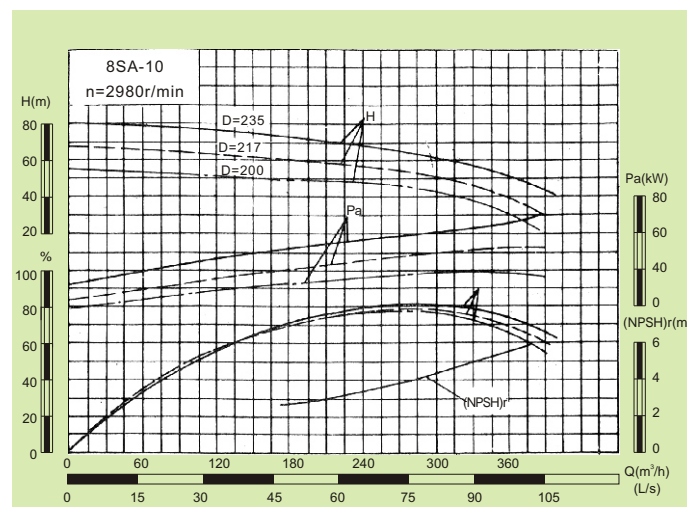
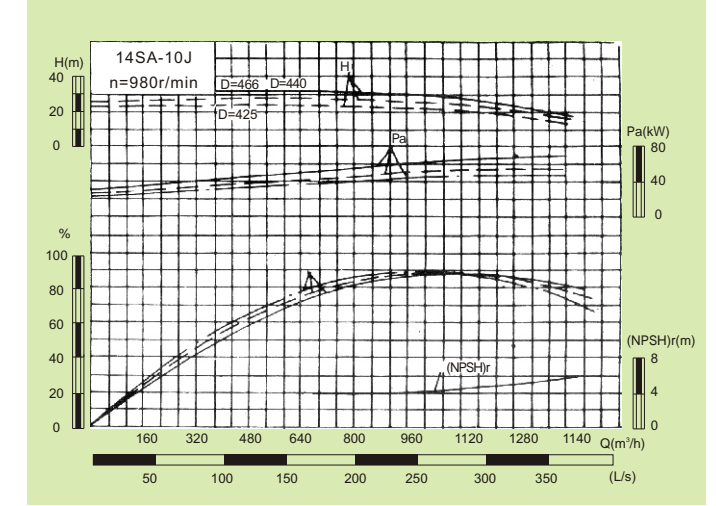
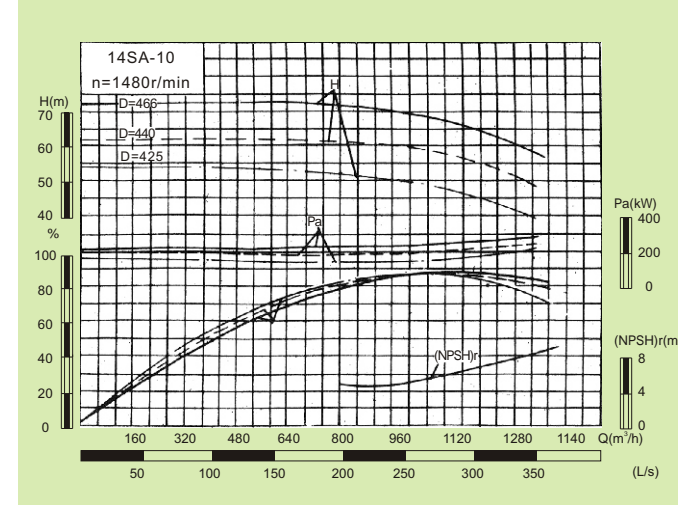
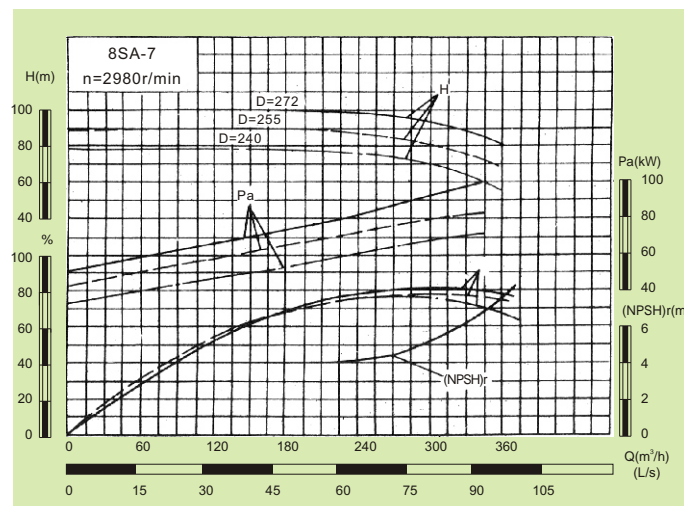
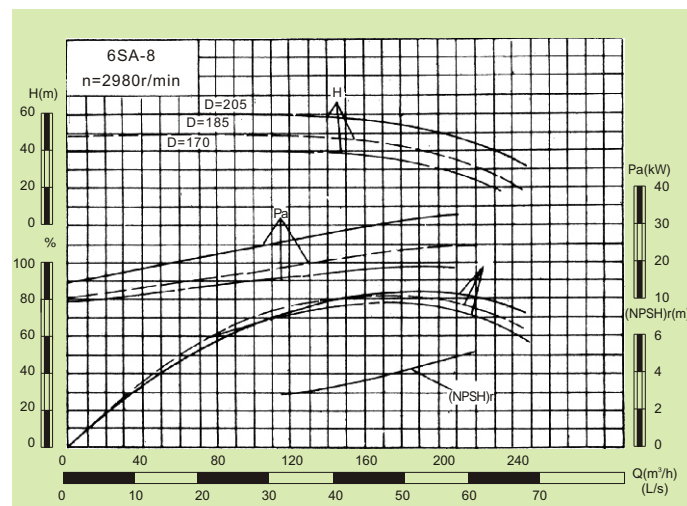
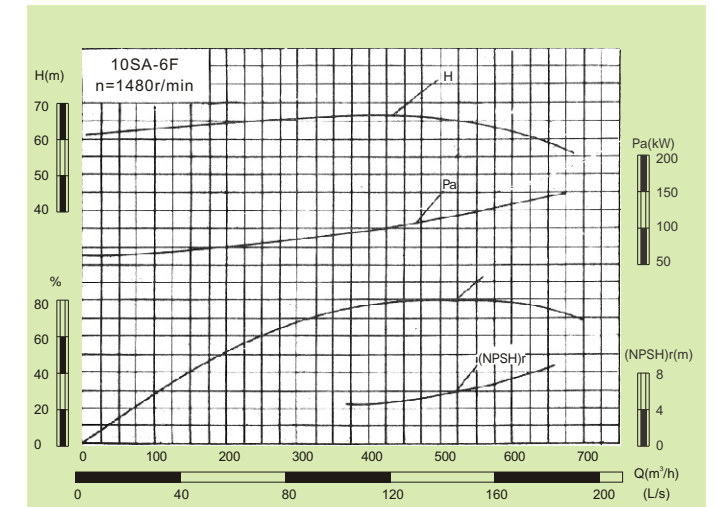
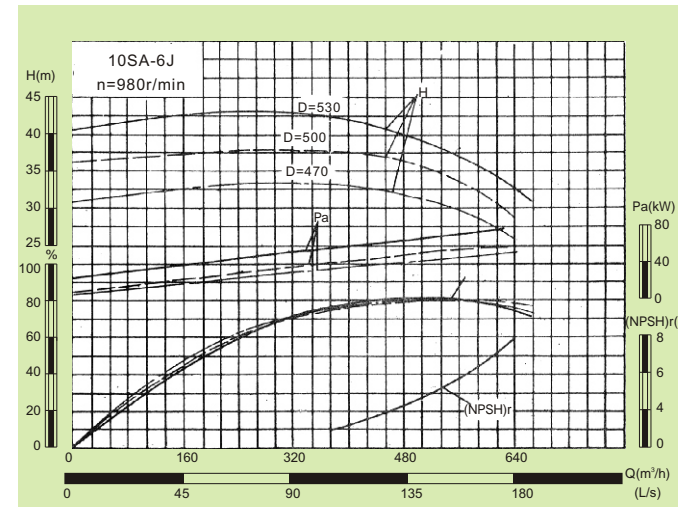
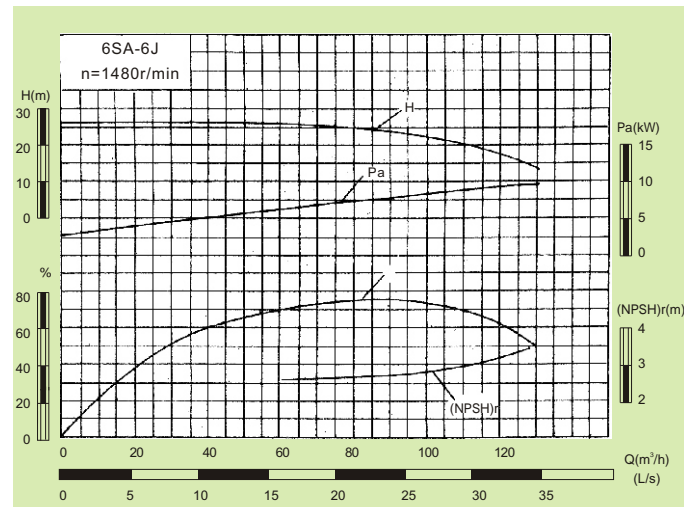
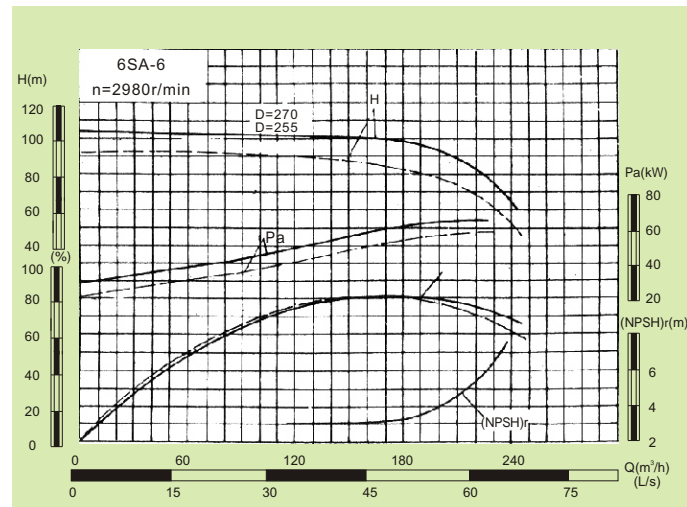
参数 Parameter 型号 Type	流量 Capacity Q		扬程 Head H	转速 Speed n	轴功率 Shaft Power Pa	配带电动机 Motor		效率 Eff.	必需汽 蚀余量 (NPSH) _r	叶轮名 义直径 Impeller Dia.	泵重 Weight
	m ³ /h	L/s	m	r/min	kW	功率 Power	型号 Type	%	m	mm	kg
						kW					
24SA-18JA (24SA-18C)	1908	530	14.7		90			84.5	3.2		
	2000	555.5	13.5	742	86.5	110	Y315L2-8	85	3.7	490	3300
	2520	700	11.2		88.3			87	4.4		
*24SA-18D	2160	600	23.2		166			82	4.7		
	3240	900	16	742	166	200	Y400-8	85	5.1	539	3300
	3450	958	14.2		163			81.6	5.5		
24SA-18F	1800	500	33.3		242.2			67.4	4.56		
	3000	833	26.6	980	263.3	280	Y4002-6	82.7	3.97	510	3300
	3375	937	23.3		263.7			81.2	6		
28SA-9	3700	1028	99.5		1164			86.1	7.87		
	4700	1306	90	980	1280	1600	Y6301-6	90	9.25	840	6800
	4896	1360	87.7		1305			89.6	10		
28SA-9J	2111	586	60.1		432			80	4.4		
	3600	1000	52	740	569	630	Y560-8	89.6	5.4	840	6800
	4200	1167	43.8		604			83	8.9		
28SA-10	4536	1260	94		1451			80	8		
	5292	1470	90	980	1544	1800	Y6302-6	84	10.4	840	5800
	6350	1764	77		1624			82	14.8		
28SA-10A	4185	1162	80		1169			78	7.2		
	4882.5	1356	76.6	980	1227	1400	Y630-6	83	9.2	775	5800
	5859	1627	65.5		1275			82	13.2		
28SA-10J	3362	933.9	51.6		590			80	5.8		
	3922	1089	49.4	742	628	710	Y560-8	84	6.8	840	5800
	4707	1307	42.3		661			82	9.2		
28SA-10JA	3102	862	43.9		463			80	5.6		
	3618	1005	42	742	498	630	Y560-8	83	6.1	775	5800
	4343	1206	36		519			82	8		
*28SA-10K	2736	760	53		556			71	4		
	3600	1000	51	742	617	710	Y560-8	81	5	848	5800
	4140	1150	47		646			82	6		
32SA-10	6300	1750	73.5		1510			83.5	5.9		
	8280	2300	67.5	742	1720	2240	Y710-3-8	88.5	7	990	8300
	9900	2750	57.5		1856			83.5	8.5		
32SA-10B	5940	1650	67.8		1321			83	5.8		
	7920	2200	62.5	742	1523	1800	Y710-1-8	88.5	6.7	950	8300
	9540	2650	52.5		1643			83	8.5		
32SA-10C	5760	1750	59		1128.6			82	5.7		
	7200	2300	53.5	740	1213	1600	Y630-8	86.5	6.3	885	8300
	8820	2750	46.5		1370			81.5	7.5		
32SA-10J	4860	1350	48.3		780			82	3.7		
	6480	1800	44.2	590	881	1120	Y630-10	88.5	4.2	990	8300
	8100	2250	35.5		960			81.5	5.3		

泵性能表 Performance Data

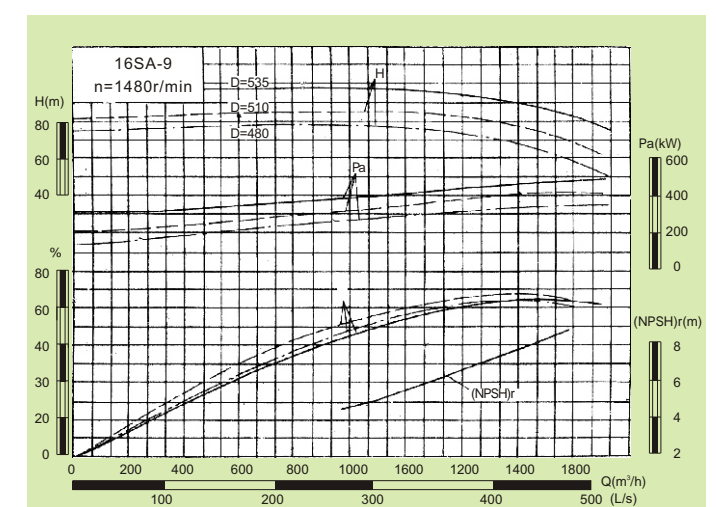
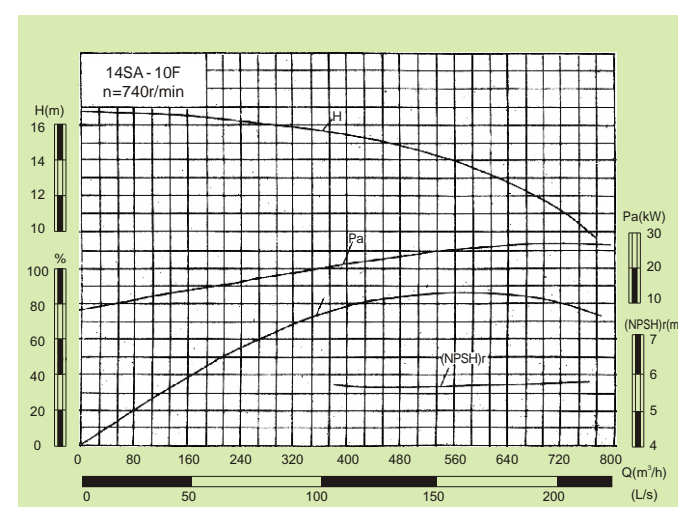
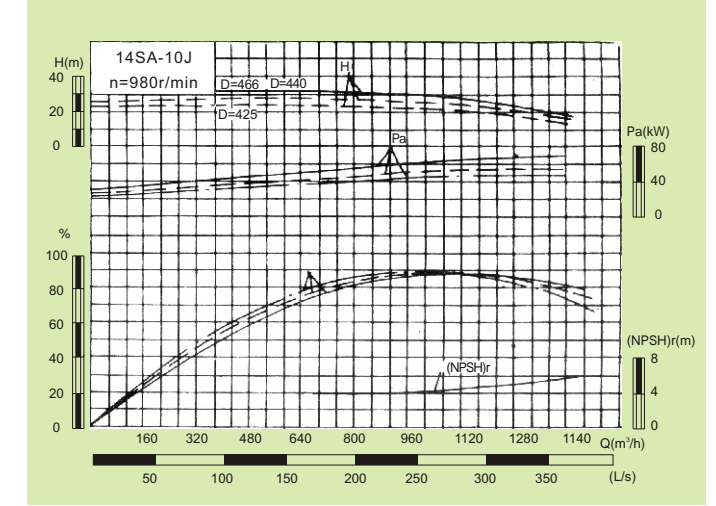
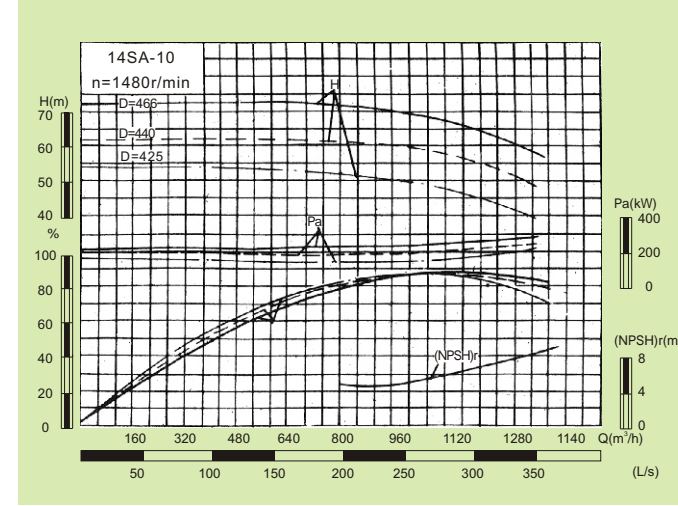
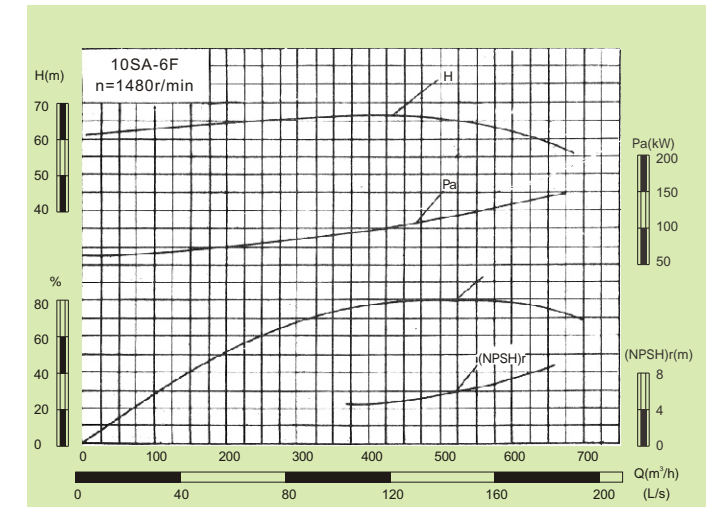
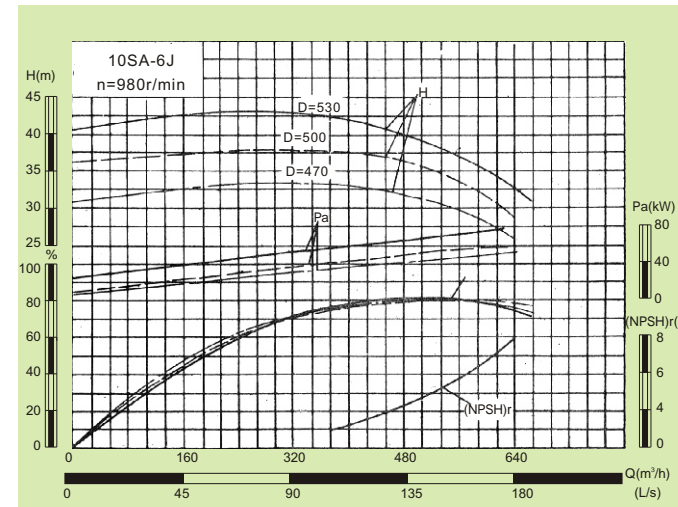
参数 Parameter 型号 Type	流量 Capacity Q		扬程 Head H	转速 Speed n	轴功率 Shaft Power Pa	配带电动机 Motor		效率 Eff.	必需汽 蚀余量 (NPSH) _r	叶轮名 义直径 Impeller Dia.	泵重 Weight
	m ³ /h	L/s	m	r/min	kW	功率 Power	型号 Type	%	m	mm	kg
						kW					
32SA-10JB (32SA-10D)	4680	1300	44		684			82	3.6		
	6300	1750	40.5	590	785	1000	Y630-10	88.5	4	950	8300
	7740	2150	33		848			82	5		
32SA-10JC	3960	1100	31.5		414			82	2.8		
	5400	1500	28.5	495	474	560	Y560-12	88.5	3.1	952	8300
	6480	1800	24		510			83	3.6		
32SA-19	4390	1219	33.3		470			84.6	6.3		
	5400	1500	29	742	473.8	560	Y5002-8	90	8.2	708	6000
	5760	1600	26.3		485.3			85	10.3		
32SA-19A	4170	1158	29.3		391			85	6.1		
	5000	1388	26	742	393.3	500	Y5001-8	90	7.2	670	6000
	5470	1519.4	23.7		415.3			85	9.3		
32SA-19B	3654	1015	23.7		275.8			85.5	6		
	4700	1305.5	20	742	284.5	355	Y450-8	90	6.3	616	6000
	5220	1450	17		282			85.5	8.2		
32SA-19E	4320	1200	36.8		512.3			84.5	5.9		
	5278	1466	33.8	740	545.8	630	Y560-8	89	6.4	730	6000
	6034	1676	29.6		559			87	9.4		
32SA-19J	3456	960	21.6		231.1			87.8	3.5		
	4320	1200	18.6	590	243.1	280	Y450-10	90	5	708	6000
	4615	1282	17		254			84.1	6.4		
32SA-19JA (32SA-19C)	3240	900	19.1		192.6			87.5	4		
	4000	1111	16.5	590	199.7	250	Y450-10	90	4.5	668	6000
	4320	1200	15.2		204.3			87.5	6.1		
32SA-19JB (32SA-19D)	2880	800	15.8		146.6			84.5	3.9		
	3800	1055	13	590	151.1	200	Y400-10	89	4	616	6000
	3960	1100	11.8		147.1			86.5	4.4		
32SA-19F	3726	1035	26.5		323.9			83	6.1		
	4705	1307	23	742	335	400	Y450-8	88	7.4	630	6000
	5407	1502	19		341.1			82	9.2		
32SA-25	4320	1200	25.2		352			84	6.1		
	5400	1500	22.3	742	367	400	Y4503-8	89.3	7.4	620	6000
	6300	1750	17.4		364			82	9.2		
32SA-25J	3240	900	16.6		179.7			81.5	4.0		
	4140	1150	15	595	190	250	Y4502-10	89	4.9	620	6000
	5040	1400	11.5		190.2			83	6.8		

注：带*号的泵型号不同

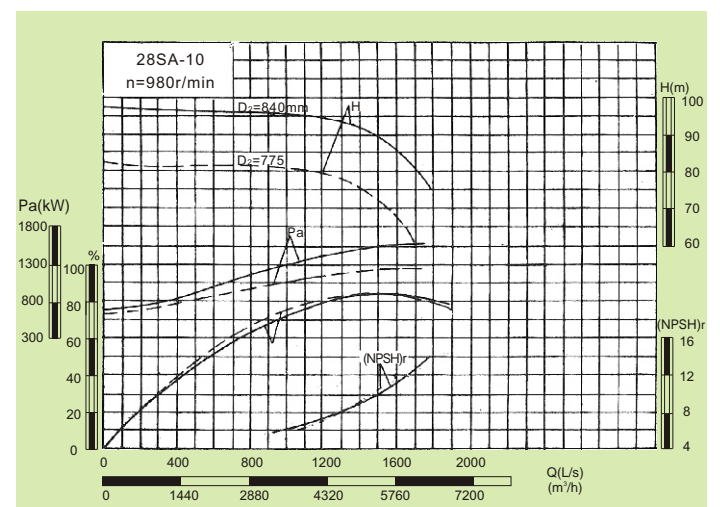
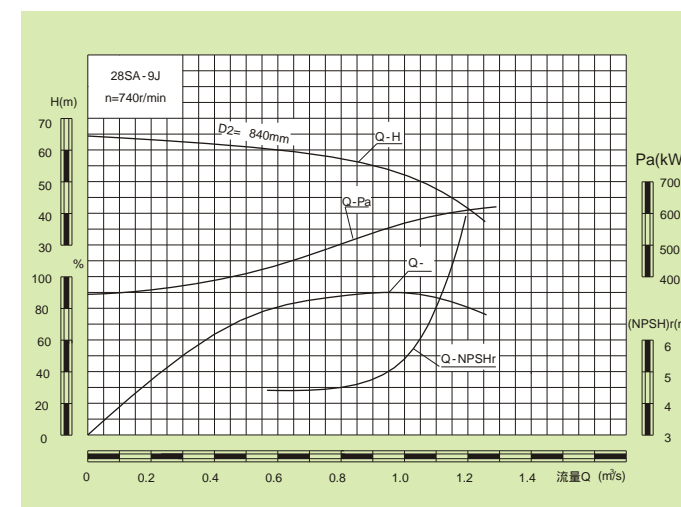
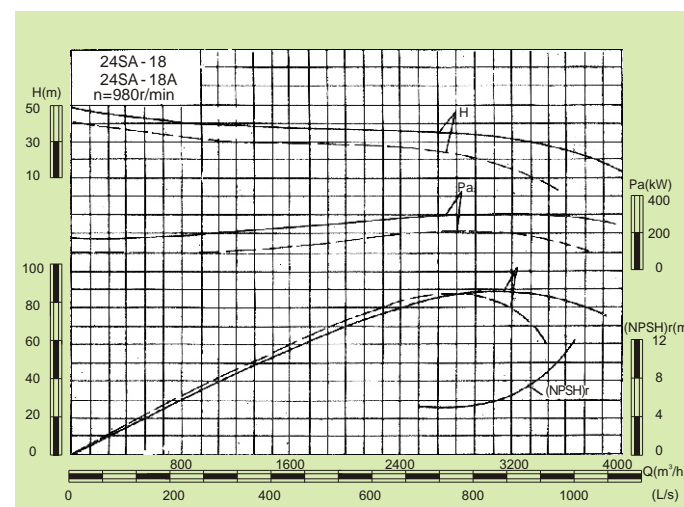
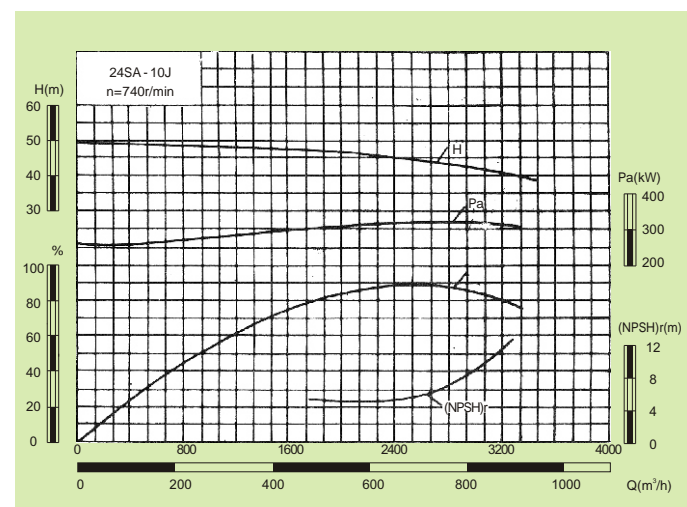
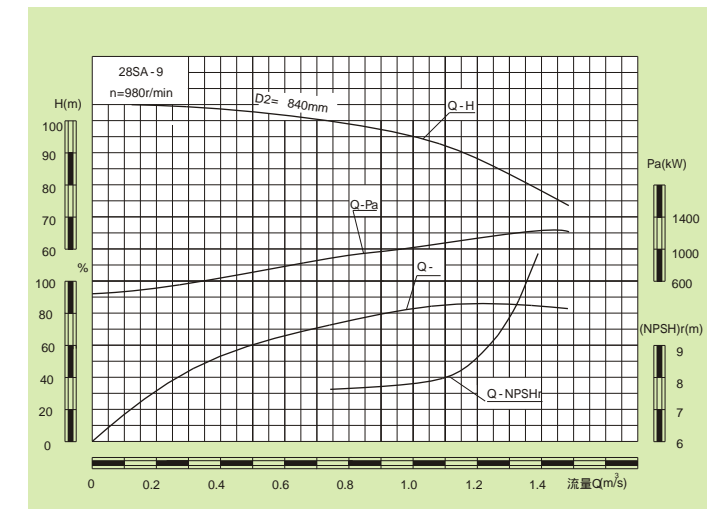
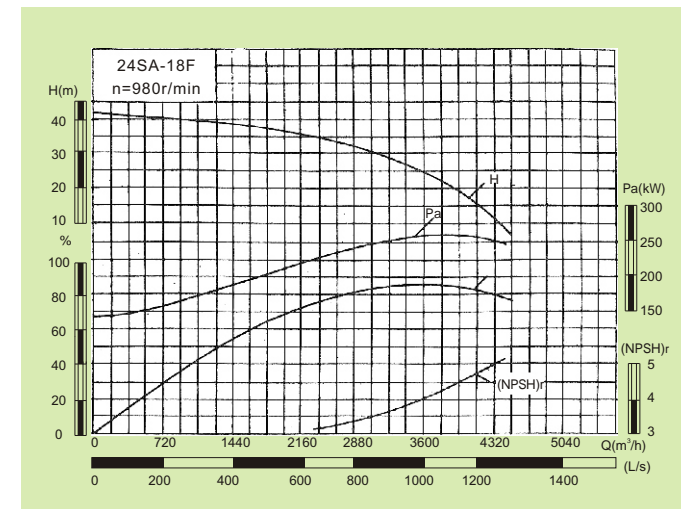
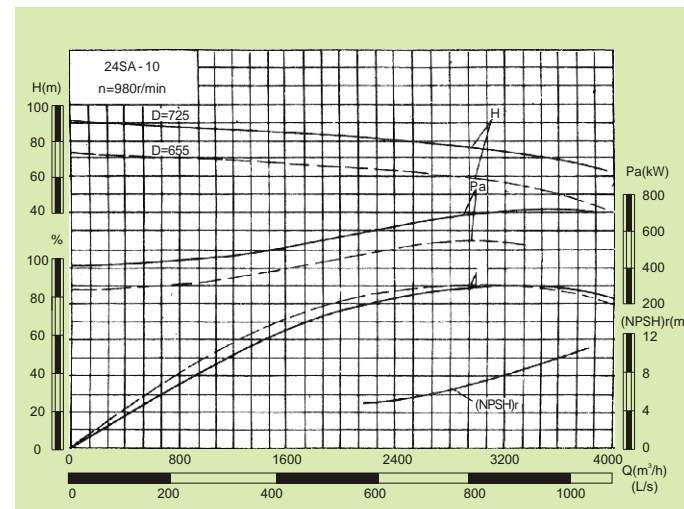
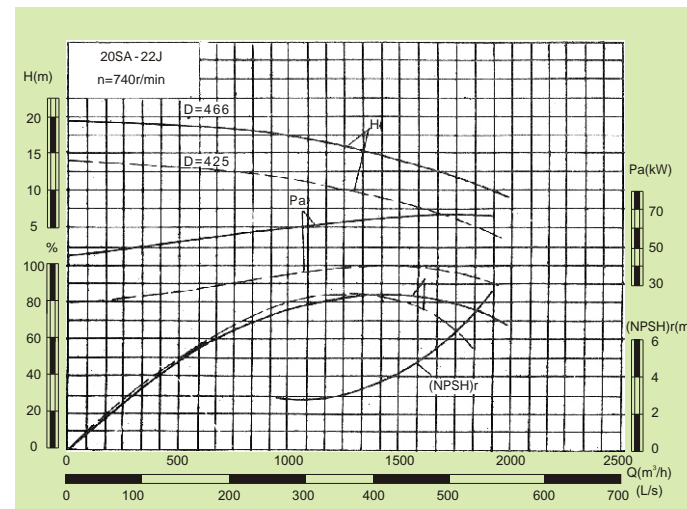
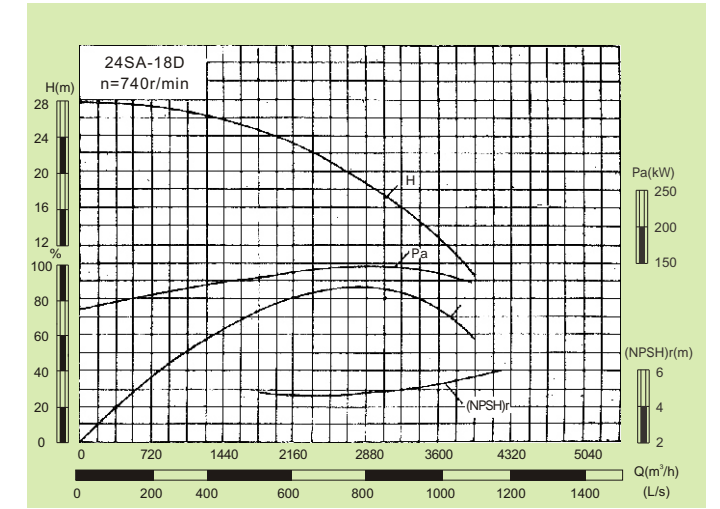
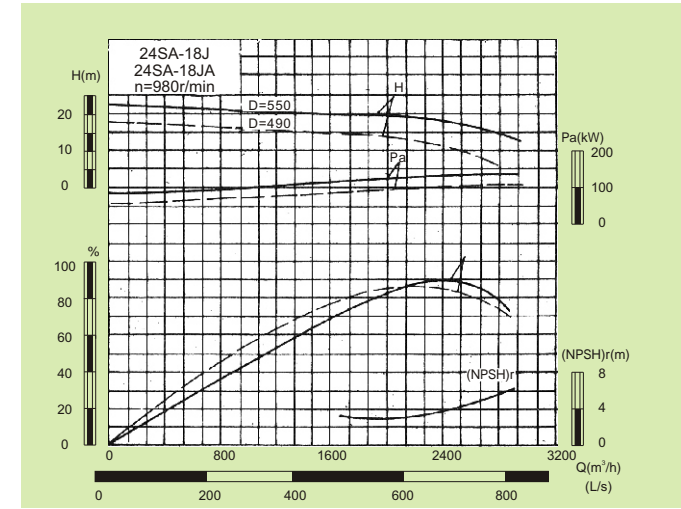
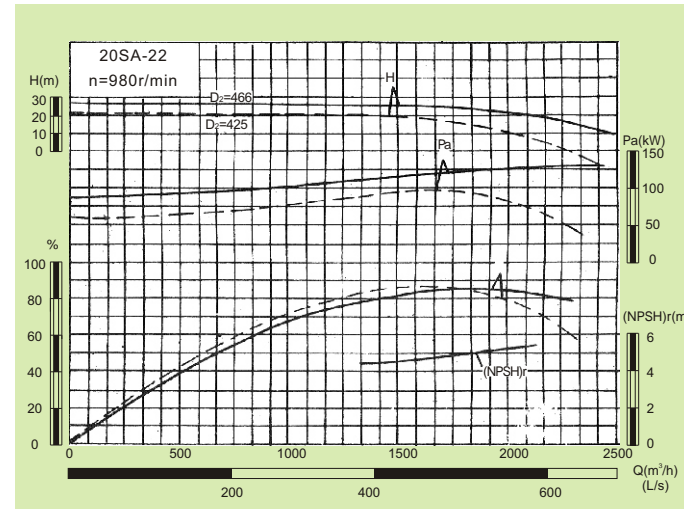
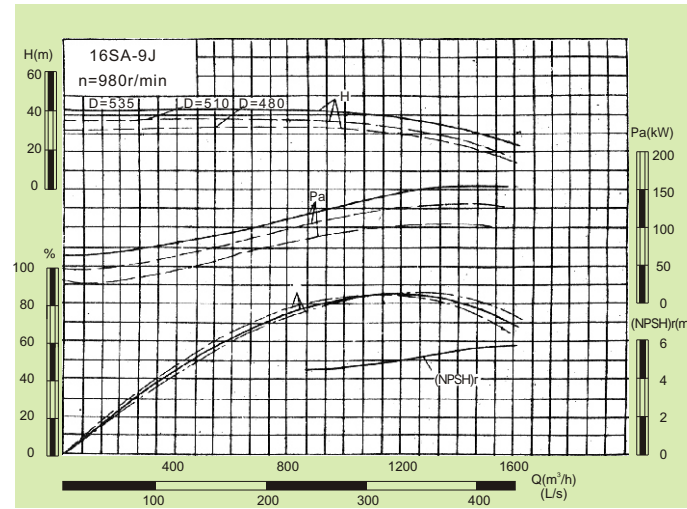
性能曲线 Performance Curve



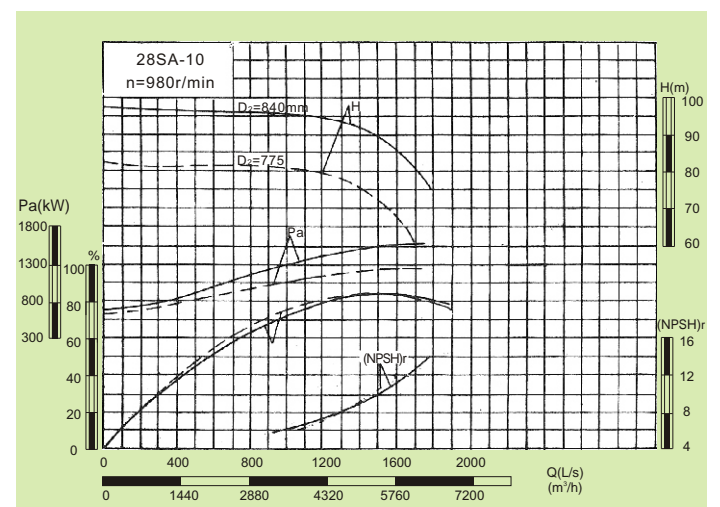
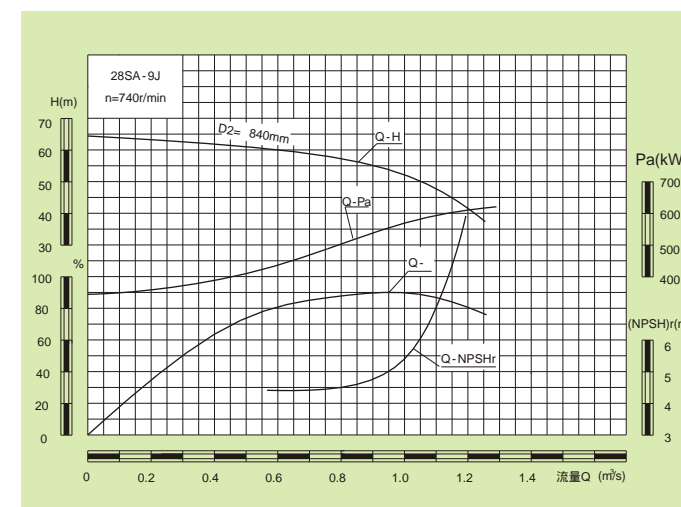
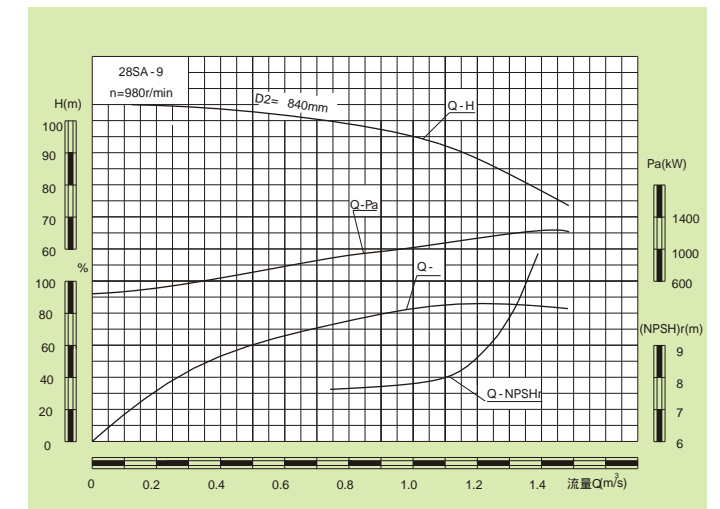
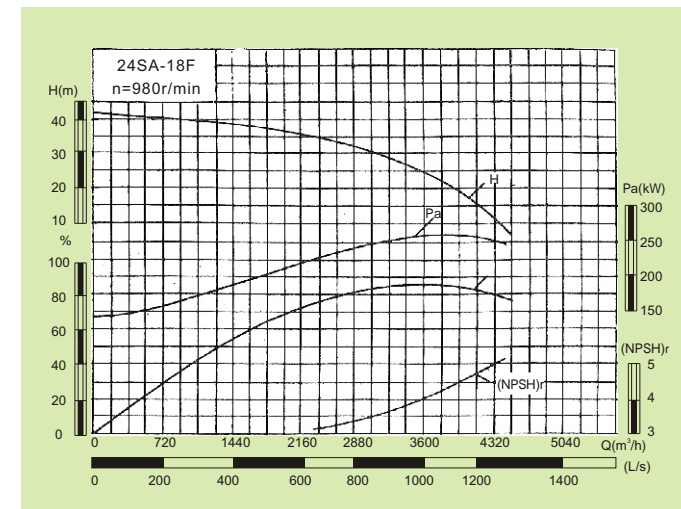
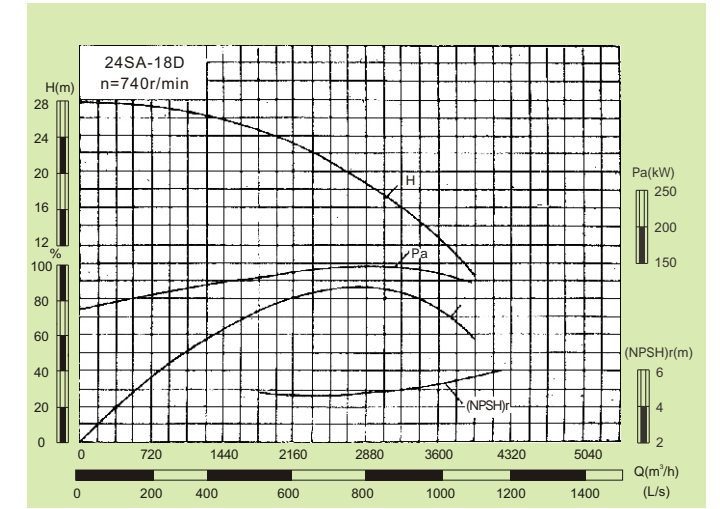
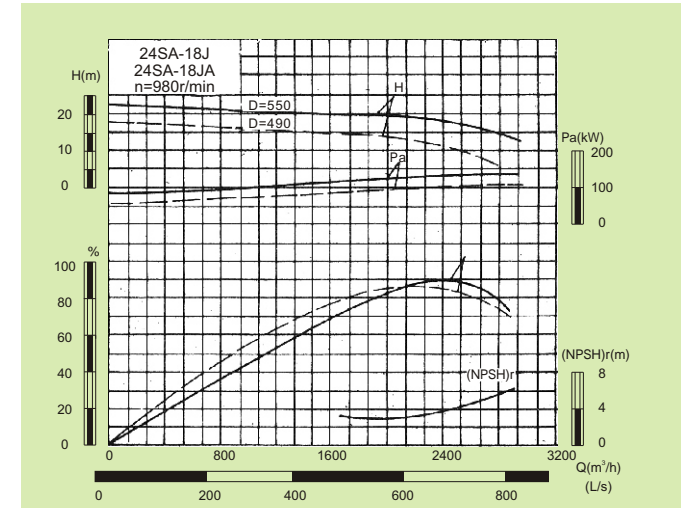
性能曲线 Performance Curve



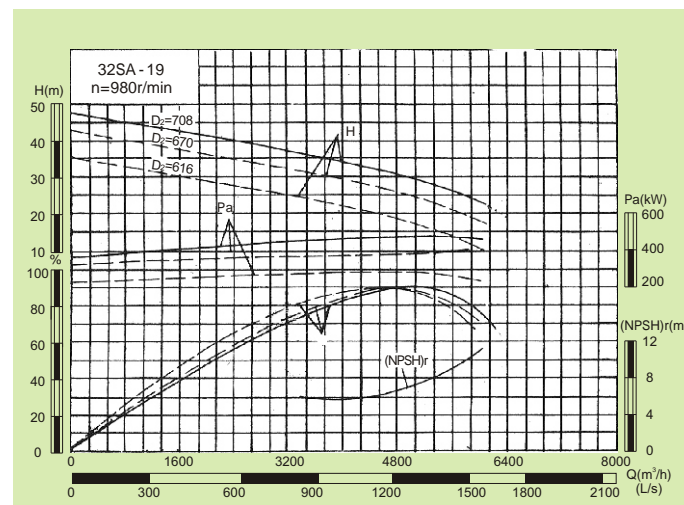
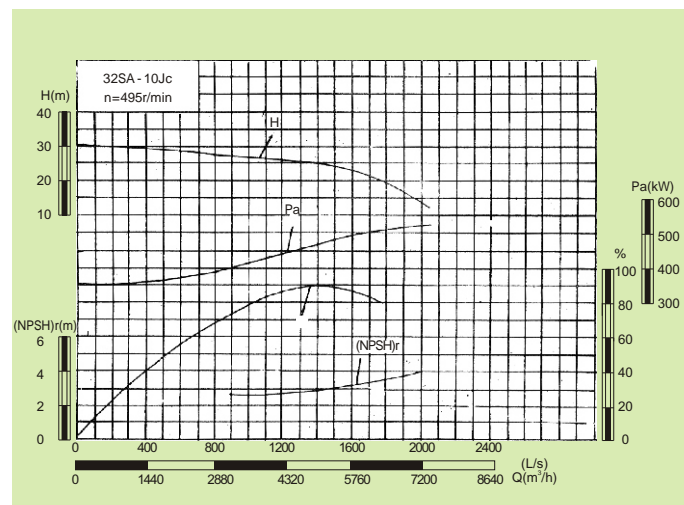
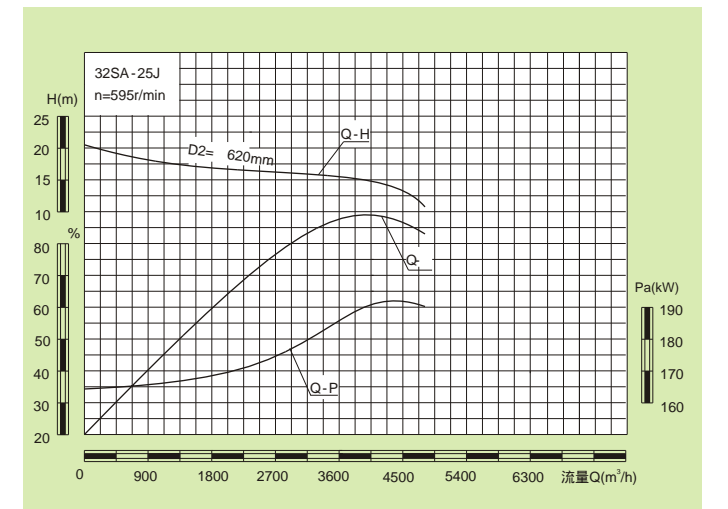
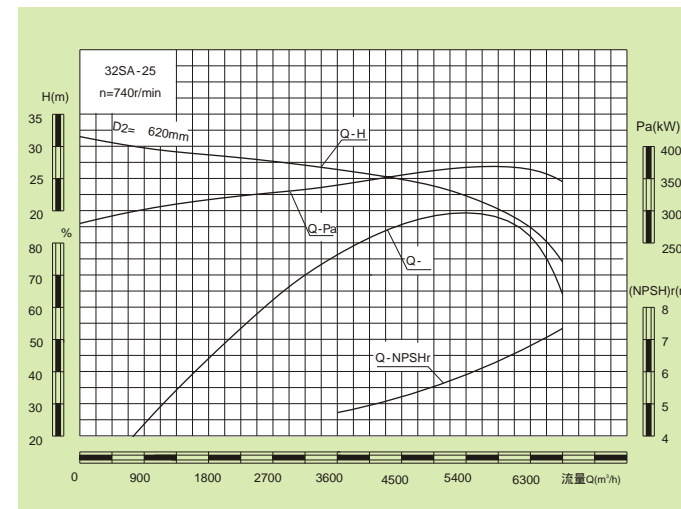
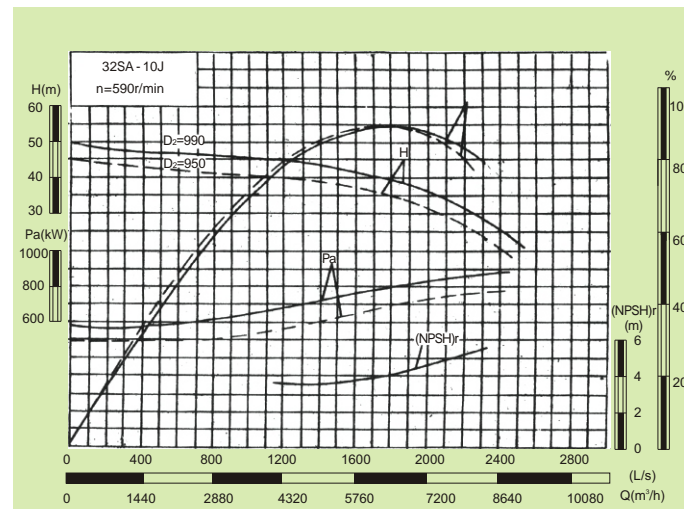
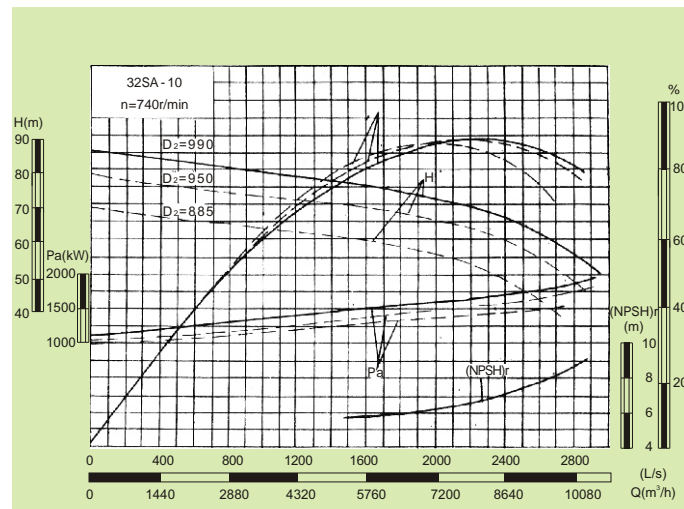
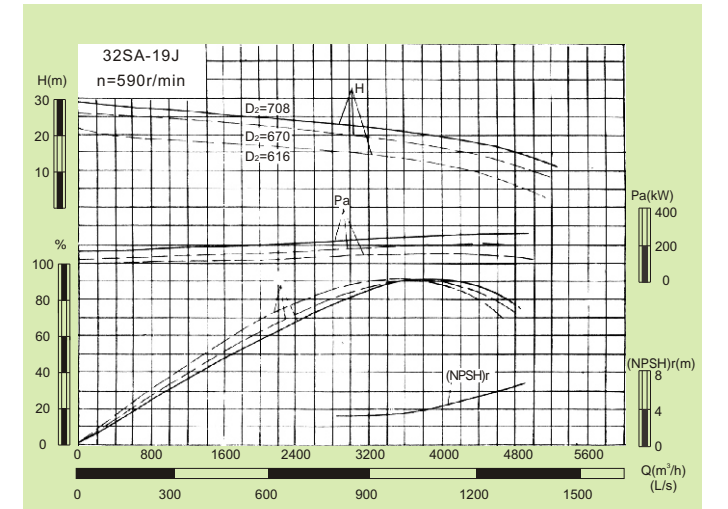
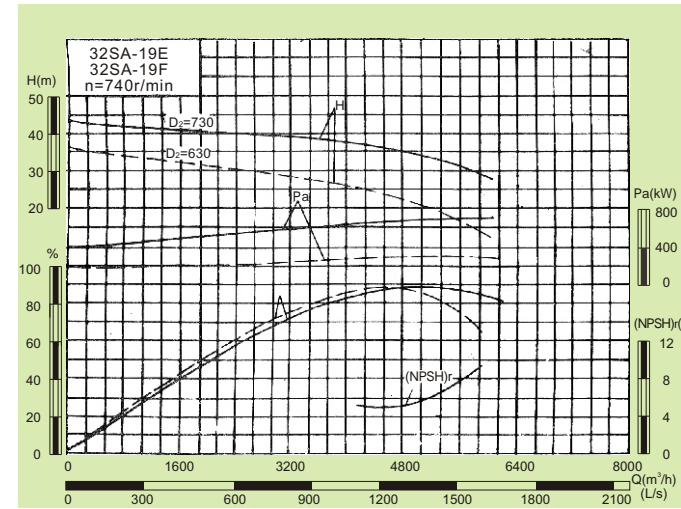
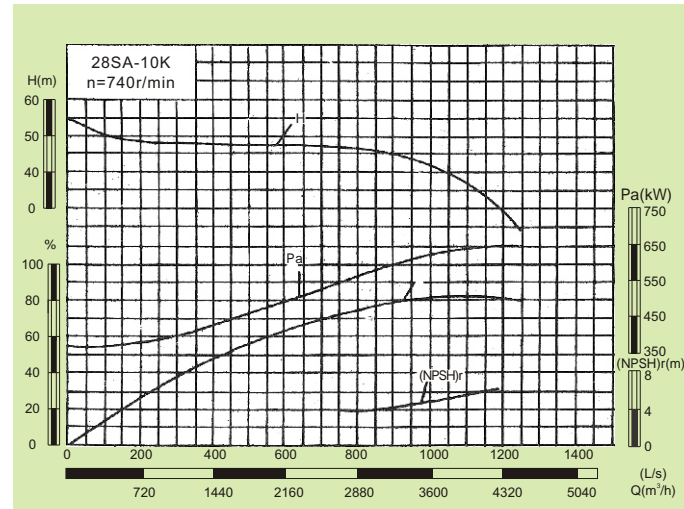
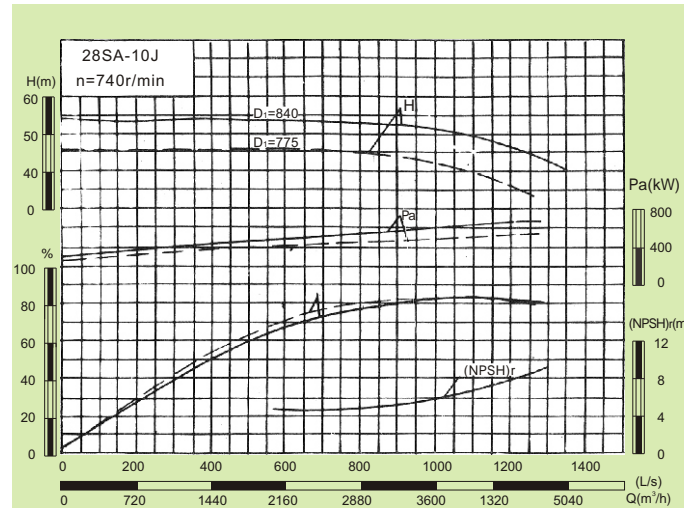
性能曲线 Performance Curve



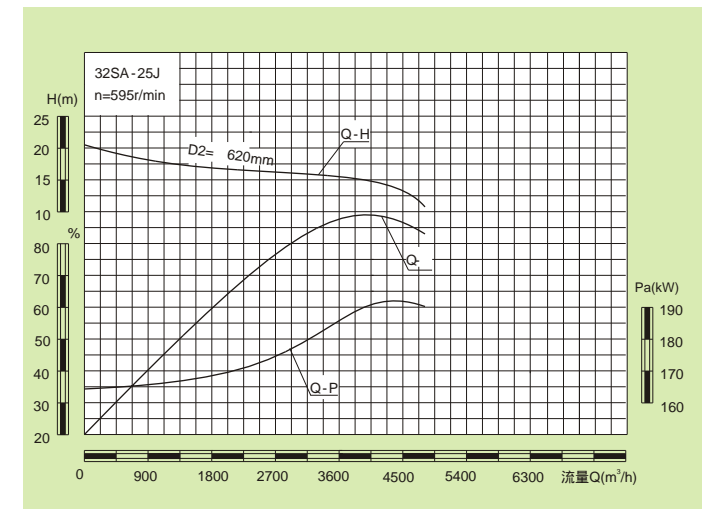
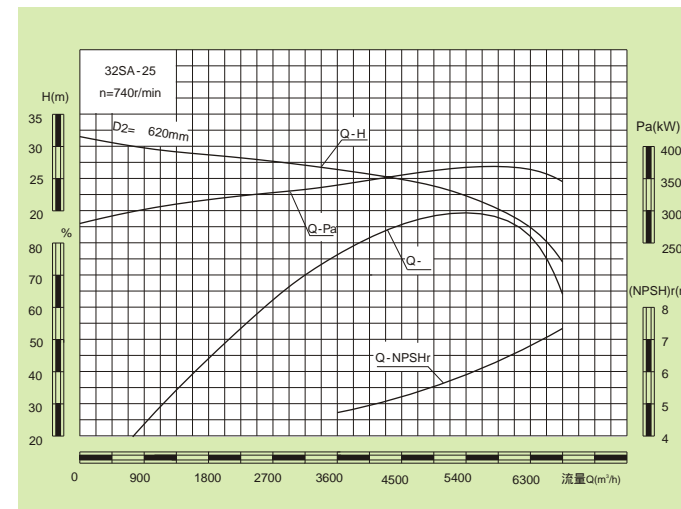
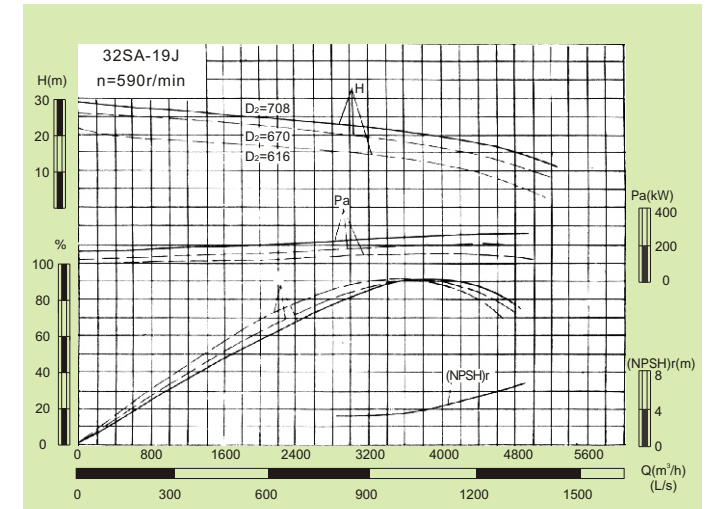
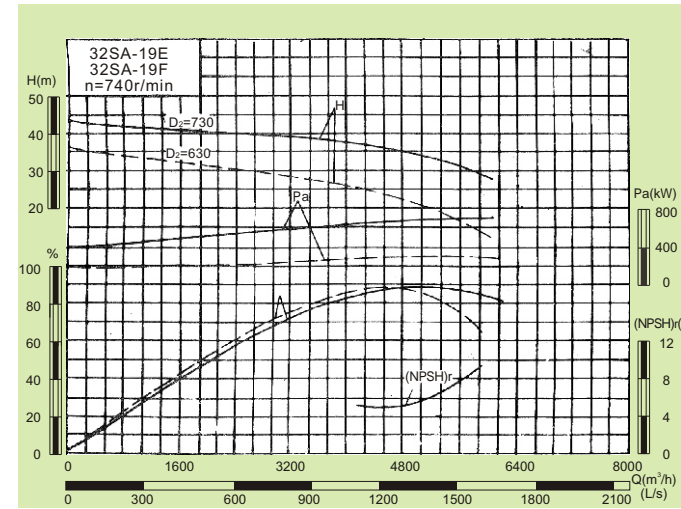
性能曲线 Performance Curve



性能曲线 Performance Curve

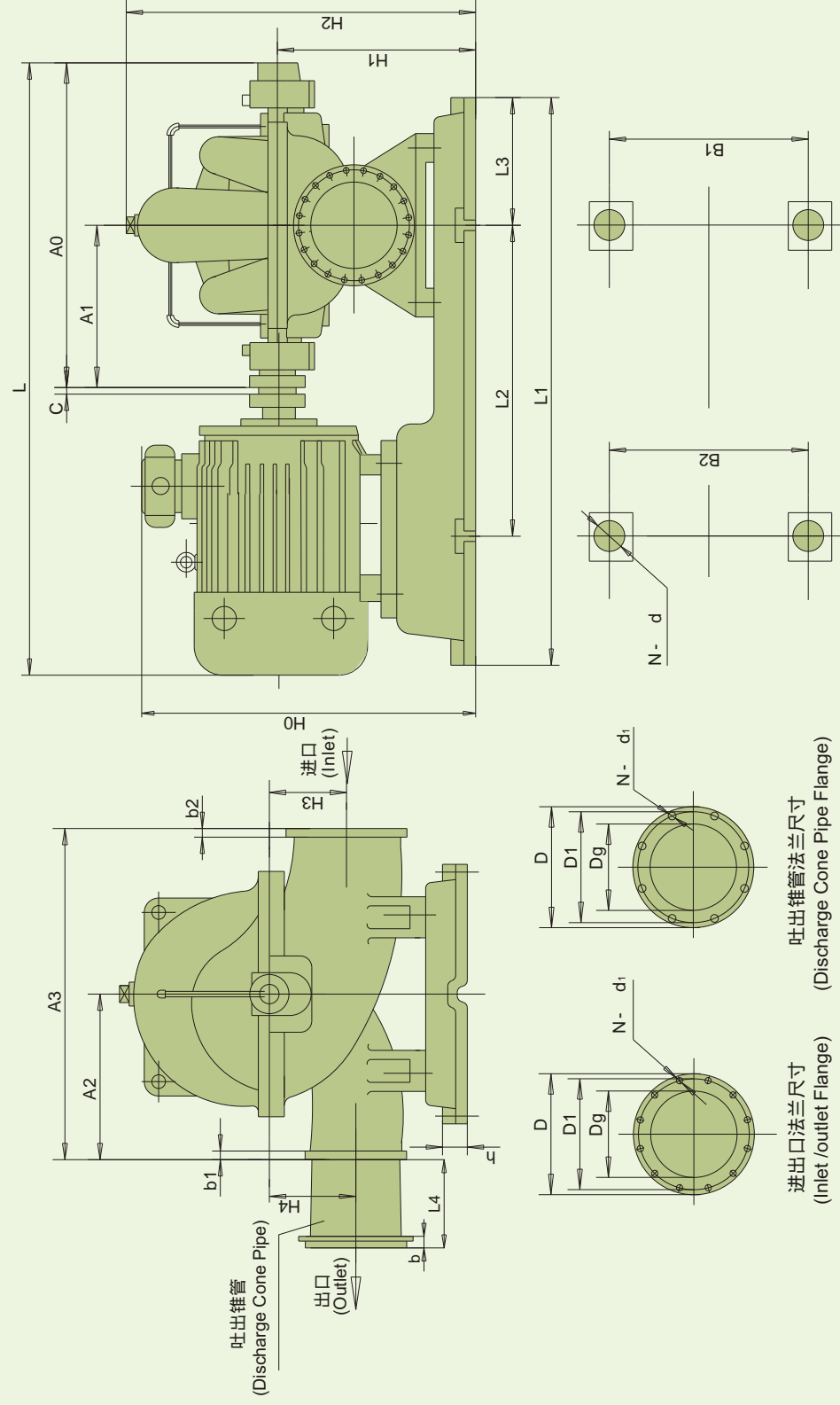


性能曲线 Performance Curve



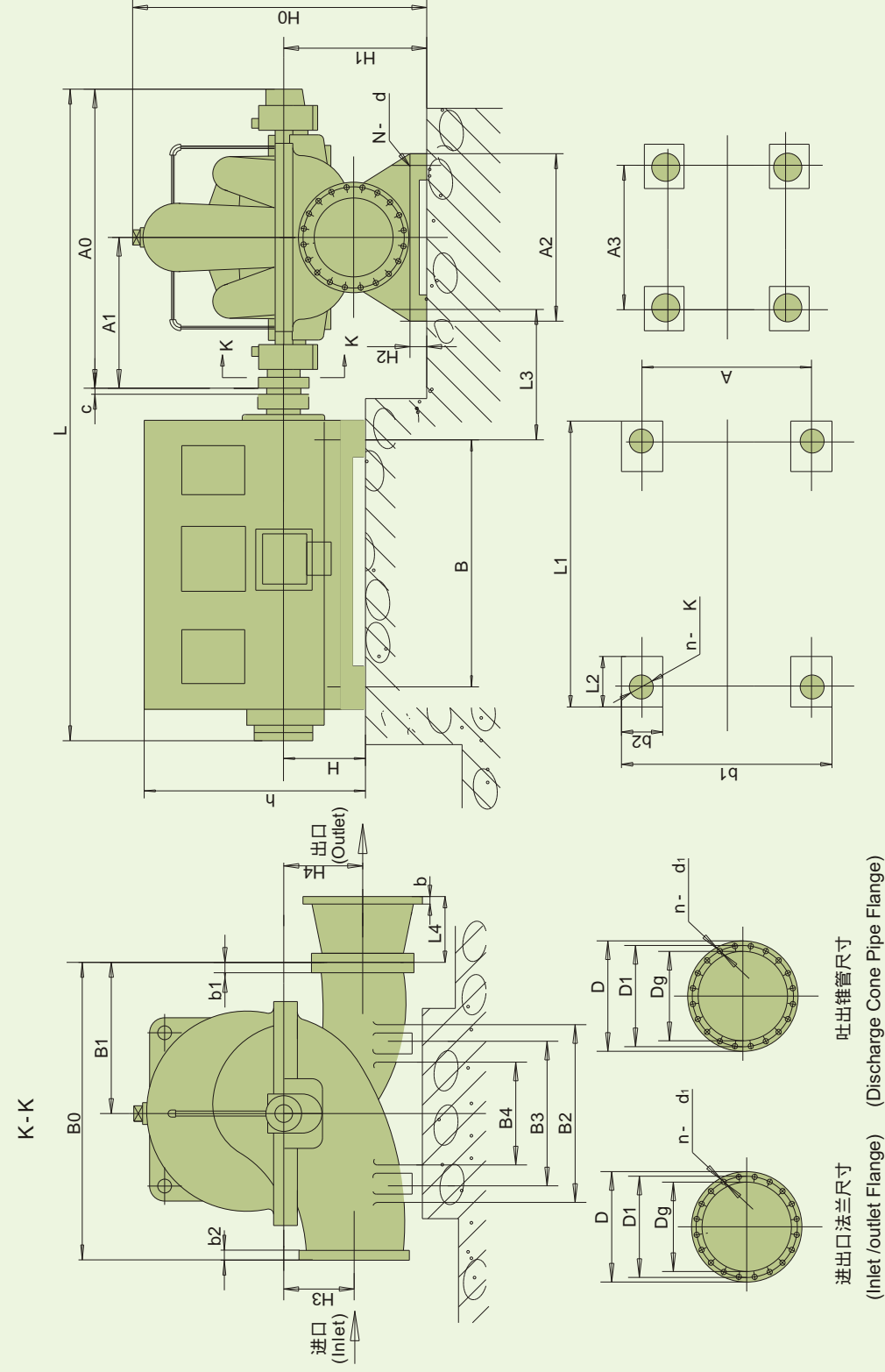
外形安装图 Overall and Installation Figure

SA外形安装尺寸图一(带公用底座) (With Common Base) (Fig.1)



外形安装图 Overall and Installation Figure

SA外形安装尺寸图二(不带公用底座) (Without Common Base) (Fig.2)



SA型泵外形安装尺寸表 (带共用底座) Overall and Installation Dimensions (With Common Base)

单位: mm

水泵型号 Type	泵外形尺寸 Pump Size																泵重 Weight (kg)		电动机 Motor		吐出锥管法兰 Discharge Cone Pipe Flange					底座代号 Common Base							
	L	L ₁	L ₂	L ₃	L ₄	A ₀	A ₁	A ₂	A ₃	A ₄	A ₅	A ₆	B ₁	B ₂	B ₃	B ₄	H ₁	H ₂	H ₃	H ₄	h	N-d	重量	功率 Power (kW)	Type	L ₁	L ₂	D ₁	D ₂	b	N-d ₁	Common Base	
	6SA-6	1718	1415	850	265									410	640	760	400	608								75	Y280S-2	300	285	240	150	26	8-22
6SA-6A	1784	1415	850	265	300	782	432	250	550	2	410	640	760	400	608									160	75	Y280S-2	300	285	240	150	26	8-22	S150-97-D1
6SA-6J	1389	1105	710	205									450	450	625	400	608								11	Y160M-4							S150-97-D2
6SA-8	1521	1165	750	180									390	500	655	380	545								37	Y200L2-2	300	285	240	150	26	8-22	S150-50-D1
6SA-8A	1521	1165	750	180	300	742	412	200	450	2	390	500	655	380	545									120	30	Y200L1-2	300	285	240	150	26	8-22	S150-50-D1
6SA-8B	1416	1077	670	207									480	480	630	380	545								22	Y180M-2							S150-50-D2
8SA-7	2030	1590	1000	250									455	730	1000	450	676								132	Y315M-2	375	340	295	200	28	8-22	S200-95-D4
8SA-7A	1988	1590	1000	250	375	792	378	300	650	4	450	730	1000	450	676									215	110	Y315S-2	375	340	295	200	28	8-22	S200-95/63-D1
8SA-7B	1798	1456	850	306									450	655	810	450	676								75	Y280M-2	350	340	295	200	28	8-22	S200-63-D2
8SA-10	1863	1546	850	306									455	655	810	450	652								75	Y280S-2							S200-63-D2
8SA-10A	1793	1352	800	272	300	839	470	300	600	2	455	600	775	450	652									160	55	Y250M-2	350	340	295	200	28	8-22	S200-63-D2
8SA-10B	1678	1256	800	206									550	550	755	450	852								45	Y225M-2							S200-63-D3

SA型泵外形安装尺寸表 (不带共用底座)

Overall and Installation Dimensions (Without Common Base)

单位: mm

水泵型号 Type	泵尺寸 Pump Size																泵重 Weight (kg)		进口法兰 Inlet Flange					出口法兰 Outlet Flange					吐出锥(短)管法兰 Discharge Cone Pipe Flange								
	A ₀	A ₁	A ₂	A ₃	A ₄	A ₅	A ₆	B ₀	B ₁	B ₂	B ₃	B ₄	H ₀	H ₁	H ₂	H ₃	H ₄	n-d	C	Dg	D	D ₁	b ₂	n-d ₁	Dg	D	D ₁	b ₁	n-d ₁	L ₄	Dg	D	D ₁	b	n-d ₁		
	6SA-6 (S150-97)	699	378	320	270	180	550	250	300	240				500	290	25	130	172	4-23	2	150	150	260	225	20	8-18	100	215	180	24	8-18	300	150	285	240	212	26
6SA-8 (S150-50)	641	350	250	200				450	200	300	220	160	445	270	20	135	140	4-17.5	2	110	150	265	225	20	8-17.5	100	210	170	20	4-17.5	300	150	285	240	212	26	8-22
8SA-7 (S200-95)	792	429	320	270	190	650	300	340	280				566	340	25	170	185	4-23	4	215	200	320	280	22	8-18	125	250	210	26	8-18	375	200	340	295	268	28	8-22
8SA-10 (S200-63)	699	378	320	270	190	600	300	340	280				542	340	25	170	170	4-23	2	235	200	320	280	22	8-18	150	285	240	24	8-23	350	200	340	295	268	28	8-22

注: 长泵遵循对产品不断完善的原则, 对产品性能和结构的部分改动, 将不另行告知。

SA型泵外形安装尺寸表 (不带共用底座)

Overall and Installation Dimensions (Without Common Base)

单位: mm

水泵型号 Type	泵尺寸 Pump Size																泵重 Weight (kg)		进口法兰 Inlet Flange					出口法兰 Outlet Flange					吐出锥(短)管法兰 Discharge Cone Pipe Flange						
	A ₀	A ₁	A ₂	A ₃	A ₄	A ₅	A ₆	B ₀	B ₁	B ₂	B ₃	B ₄	H ₀	H ₁	H ₂	H ₃	H ₄	n-d	C	Dg	D	D ₁	b ₂	n-d ₁	Dg	D	D ₁	b ₁	n-d ₁	L ₄	Dg	D	D ₁	b	n-d ₁
	10SA-6	1166	647	500	380	230	1258	648	850	650	450	890	500	35	243	335	4-27	5	600	250	390	350	39	12-23	200	335	295	39	8-23	300	250	395	350	320	28
14SA-10	(1401) 1393	(768) 760	720	600	400	1392	770	790	600	410	1017.5	600	35	335	435	4-35	5	1210	350	520	470	38	16-25	300	460	410	34	12-25	300	350	505	460	430	30	16-22
16SA-9	1747	907	820	700	480	1645	900	900	700	500	1130	670	40	372	482	4-35	6	1910	400	580	525	40	16-30	350	520	470	38	16-26	300	400	565	515	482	32	16-26
20SA-22	(1563) 1547	(853) 837	780	660	460	1400	550	800	600	400	1260	760	37	460	440	4-30	5	1610	500	640	600	40	16-24	400	540	495	40	16-24	600	500	670	620	585	34	20-26
24SA-10	2106	1147	1100	900	600	2300	1300	1300	1000	700	1580	950	50	532	692	4-42	7	4100	600	840	770	54	20-41	500	705	650	46	20-34	280	500	670	620	585	34	20-26
24SA-18	2162	1125	940	780	540	1760	740	960	720	480	1480	900	45	550	525	4-35	6	3300	600	780	725	36	20-30	500	670	620	34	20-25							
28SA-9	2302	1242	1200	1000	700	2260	1160	1500	1200	900	1760	1050	50	595	758	4-46	8	6800	700	895	840	60	24-30	500	705	650	50	20-34	280	500	670	620	585	34	20-26
28SA-10	2292 2517	1242	1200	1000	700	2260	1160	1500	1200	900	1802	1050	50	595	758	4-46	8	5800	700	895	840	40	24-30	500	715	650	44	20-33	280	500	670	620	585	34	20-26
32SA-10	2750 3050	1510	1300	1000	700	2285	1000	1700	1350	1000	2105	1250	70	700	850	4-58	8	8300	800	1015	950	44	24-33	600	780	725	36	20-30							
32SA-19	2354	1168	1200	1000	700	2150	750	1200	900	600	1895	1150	60	690	660	4-42	8	6000	800	1015	950	44	24-33	600	780	725	36	20-30							
32SA-25	2354	1168	1200	1000	700	2150	750	1200	900	600	1895	1150	60	690	660	4-42	8	6000	800	1015	950	44	24-33	600	780	725	36	20-30	1050	800	1015	950	905	44	24-33

注: 1.带“ ”的尺寸为两端伸轴的尺寸, 2.尺寸A1为泵中心到联轴器端面距离, 3.A0、A1()内的尺寸为16联轴器。